

Contents

2024 Oregon State Test Results Data Visualizations	5
Purpose of State Summative Tests	5
PARTICIPATION	6
Participation Rates 2022 to 2024	6
All Students	6
Participation Rates 2022 to 2024	7
English Language Arts, By Grade Level	7
Participation Rates 2022 to 2024	8
Math, By Grade Level.....	8
Participation Rates 2022 to 2024	8
Science, By Grade Level.....	8
11th Grade Testing Participation by Subject and Year	9
Participation by Student Group	9
English Language Arts	9
Participation by Student Group	10
Math	10
Participation by Student Group	10
Science.....	10
Participation Rates Table by Grade 2022 to 2024	11
Participation Rates Table by Student Group 2022 to 2024	11
ACHIEVEMENT - MATHEMATICS.....	12
3rd Grade Achievement in Math by Year - All Students	12
3rd Grade Mathematics Achievement by Racial/Ethnic Identity.....	12
3rd Grade Mathematics Achievement for English Learners, Students Experiencing Poverty, and Students with IEPs	13
4th Grade Mathematics Achievement Year - All Students	14
4th Grade Mathematics Achievement by Racial/Ethnic Identity.....	14
4th Grade Mathematics Achievement for English Learners, Students Experiencing Poverty, and Students with IEPs	15
5th Grade Achievement in Math by Year - All Students	16
5th Grade Mathematics Achievement by Racial/Ethnic Identity.....	16
5th Grade Mathematics Achievement for English Learners, Students Experiencing Poverty, and Students with IEPs	17

6th Grade Mathematics Achievement by Year - All Students	18
6th Grade Mathematics Achievement by Racial/Ethnic Identity	18
6th Grade Mathematics Achievement for English Learners, Students Experiencing Poverty, and Students with IEPs	19
7th Grade Mathematics Achievement by Year - All Students	20
7th Grade Mathematics Achievement by Racial/Ethnic Identity	20
7th Grade Mathematics Achievement for English Learners, Students Experiencing Poverty, and Students with IEPs	21
8th Grade Achievement in Math by Year - All Students	22
8th Grade Mathematics Achievement by Racial/Ethnic Identity	22
8th Grade Mathematics Achievement for English Learners, Students Experiencing Poverty, and Students with IEPs	23
11th Grade Achievement in Mathematics by Year - All Students.....	24
11th Grade Mathematics Achievement by Racial/Ethnic Identity	24
11th Grade Mathematics Achievement for English Learners, Students Experiencing Poverty, and Students with IEPs	25
Math Achievement by Racial/Ethnic Identity - All Grades	26
Math Achievement for English Learners, Students Experiencing Poverty, and Students with IEPs - All Grades.....	27
ACHIEVEMENT - ENGLISH LANGUAGE ARTS (ELA)	28
3rd Grade Achievement in ELA by Year - All Students	28
3rd Grade English Language Arts Achievement by Racial/Ethnic Identity	28
3rd Grade English Language Arts Achievement for English Learners, Students Experiencing Poverty, and Students with IEPs	29
4th Grade Achievement in ELA by Year - All Students	30
4th Grade English Language Arts Achievement by Racial/Ethnic Identity	30
4th Grade English Language Arts Achievement for English Learners, Students Experiencing Poverty, and Students with IEPs	31
5th Grade Achievement in ELA by Year - All Students	32
5th Grade English Language Arts Achievement by Racial/Ethnic Identity	32
5th Grade English Language Arts Achievement for English Learners, Students Experiencing Poverty, and Students with IEPs	33
6th Grade Achievement in ELA by Year - All Students	34
6th Grade English Language Arts Achievement by Racial/Ethnic Identity	34
6th Grade English Language Arts Achievement for English Learners, Students Experiencing Poverty, and Students with IEPs	35
7th Grade Achievement in ELA by Year - All Students	36
7th Grade English Language Arts Achievement by Racial/Ethnic Identity	36
7th Grade English Language Arts Achievement for English Learners, Students Experiencing Poverty, and Students with IEPs	37
8th Grade Achievement in ELA by Year.....	38

8th Grade English Language Arts Achievement by Racial/Ethnic Identity	38
8th Grade English Language Arts Achievement for English Learners, Students Experiencing Poverty, and Students with IEPs	39
11th Grade Achievement in ELA by Year - All Students	40
11th Grade English Language Arts Achievement by Racial/Ethnic Identity	40
11th Grade English Language Arts Achievement for English Learners, Students Experiencing Poverty, and Students with IEPs	41
ELA Achievement by Racial/Ethnic Identity - All Students	42
ELA Achievement for English Learners, Students Experiencing Poverty, and Students with IEPs - All Students	43
ACHIEVEMENT - SCIENCE	44
5th Grade Science Achievement by Racial/Ethnic Identity	44
5th Grade Science Achievement for English Learners, Students Experiencing Poverty, and Students with IEPs	45
8th Grade Science Achievement by Racial/Ethnic Identity	46
8th Grade Science Achievement for English Learners, Students Experiencing Poverty, and Students with IEPs	47
11th Grade Science Achievement by Racial/Ethnic Identity.....	48
11th Grade Science Achievement for English Learners, Students Experiencing Poverty, and Students with IEPs	49
Achievement Rates by Grade Table - Change from 2022 to 2024	50
Achievement Rates by Student Group Table - Change from 2022 to 2024	51
Achievement by Performance Level by Grade - All Students	52
3rd Grade Achievement by Performance Level	52
4th Grade Achievement by Performance Level.....	52
5th Grade Achievement by Performance Level.....	53
6th Grade Achievement by Performance Level.....	53
7th Grade Achievement by Performance Level.....	54
8th Grade Achievement by Performance Level.....	54
11th Grade Achievement by Performance Level.....	55
.....	55
Supplemental Data Tables.....	56
American Indian/Alaska Native Students - All Grades, All Content Areas	56
Asian Students - All Grades, All Content Areas	56
Black/African American Students - All Grades, All Content Areas	57
Hispanic/Latino/a/x Students - All Grades, All Content Areas	57
Multi-Racial Students - All Grades, All Content Areas	58
Native Hawaiian/Pacific Islander Students - All Grades, All Content Areas	58
White Students - All Grades, All Content Areas	59

English Learners - All Grades, All Content Areas59
Students with IEPs - All Grades, All Content Areas60
Students Experiencing Poverty - All Grades, All Content Areas60

2024 Oregon State Test Results Data Visualizations

October 2024

The latest state summative test data show that there have been areas of progress statewide, but we are still behind pre-pandemic performance levels overall.

Nationally, educators and policymakers are grappling with significant academic setbacks due to the disruptions of the past few years. These data offer an opportunity to deepen and refine Oregon's efforts for continued recovery and growth, using this information as a catalyst to guide necessary reforms and resource allocation.

While the data present a complex picture, it underscores the urgency of focused investments, particularly in English Language Arts (ELA), and acknowledges incremental gains in mathematics.

Purpose of State Summative Tests

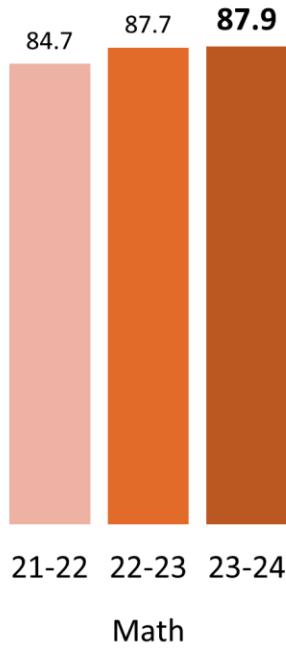
State summative tests are designed to shine a light where Oregon's education system is doing well, where Oregon can build from strength, and where more attention is needed in serving the learning needs of all our scholars. State test results matter; they are the only indicator we have that we can use to reliably understand how well Oregon's K-12 education system is serving all of our students academically in three critical subjects. While state tests reliably measure student group learning in reference to Oregon's challenging content standards in English language arts, mathematics, and science when participation thresholds are met, they do not identify all of the strengths, talents, gifts, or needs of any individual. And, they do not describe the full context of what a school is providing socially or academically to students.

Data from different types of assessments are best leveraged when they identify learning edges and the next steps for district and state education systems (summative), classrooms (interim/benchmark), and students (formative).

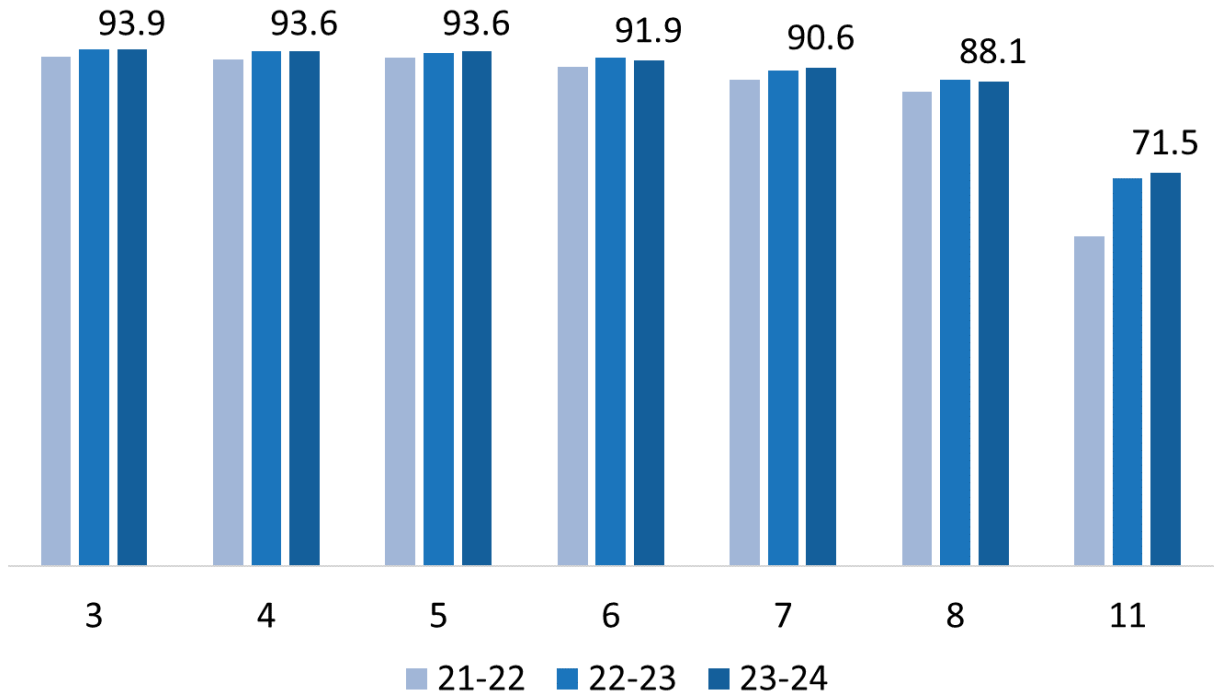
Oregon's state assessment system continues to strive for balance by including a focus on culturally responsive practices which require a broad range of data sources in addition to academic assessments.

PARTICIPATION

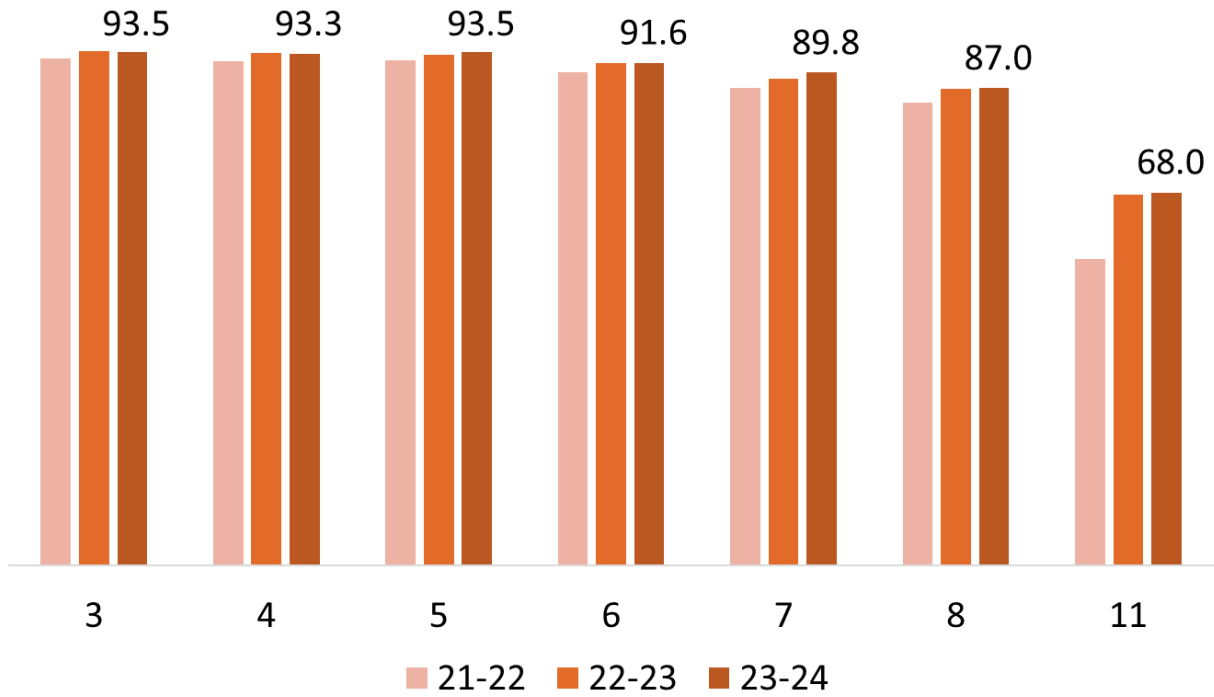
Participation Rates 2022 to 2024
All Students



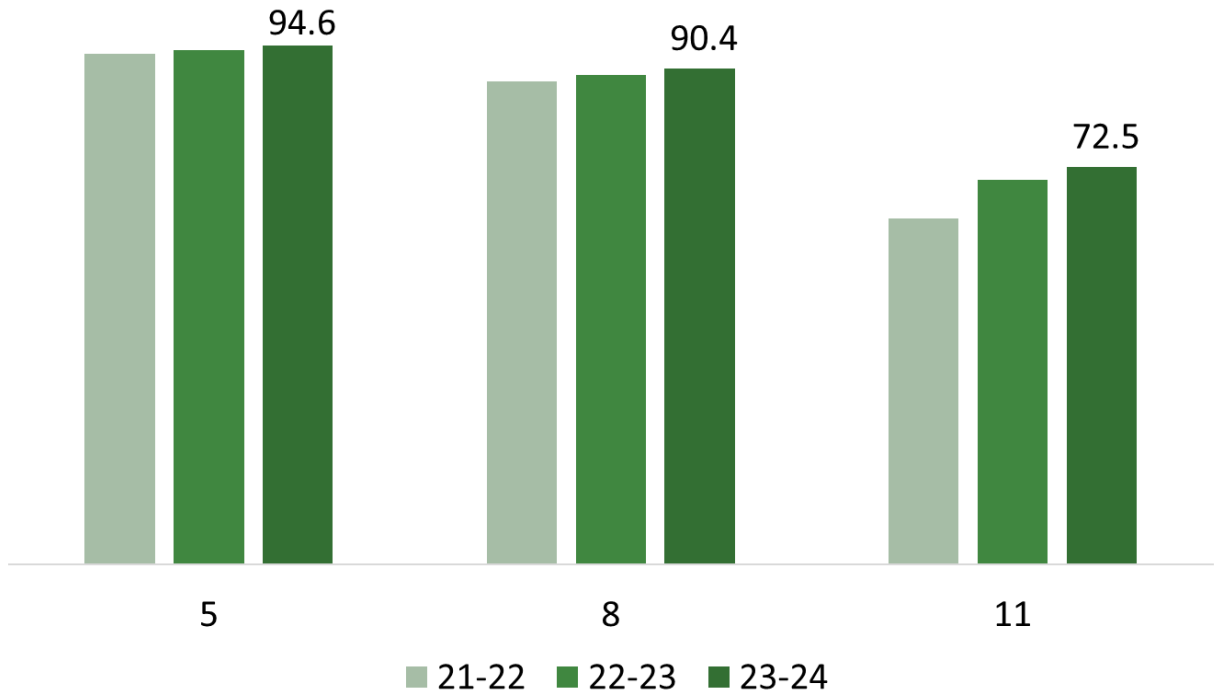
Participation Rates 2022 to 2024
English Language Arts, By Grade Level



Participation Rates 2022 to 2024
Math, By Grade Level

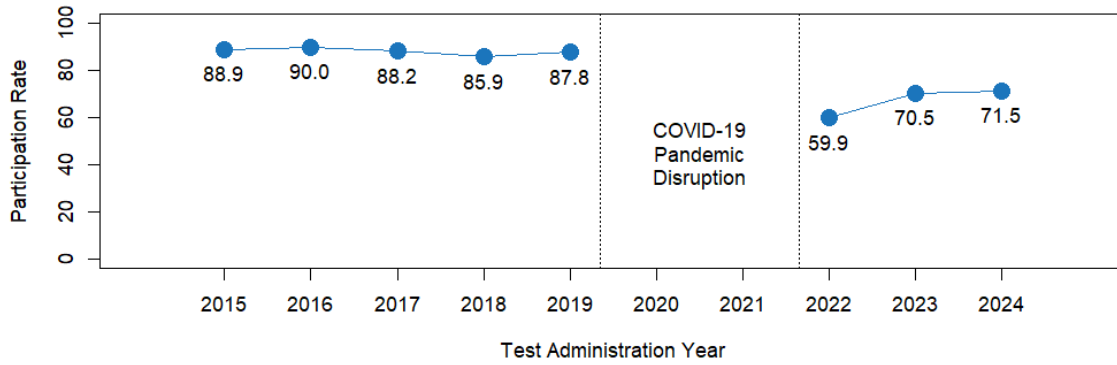


Participation Rates 2022 to 2024
Science, By Grade Level

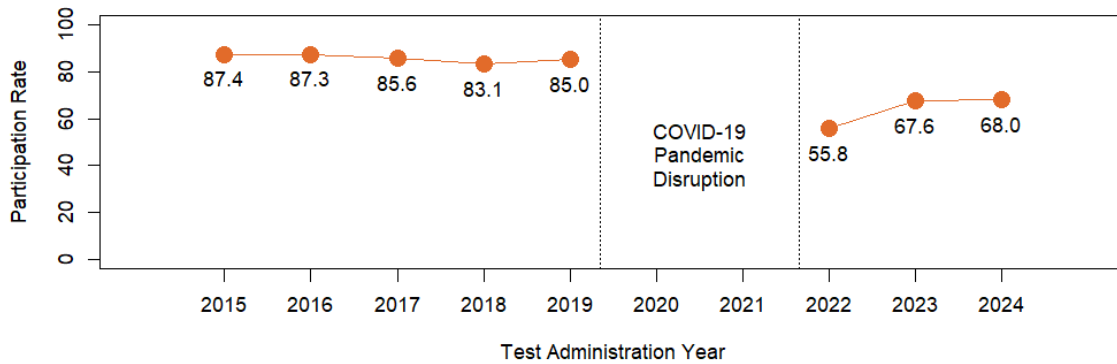


11th Grade Testing Participation by Subject and Year

English Language Arts

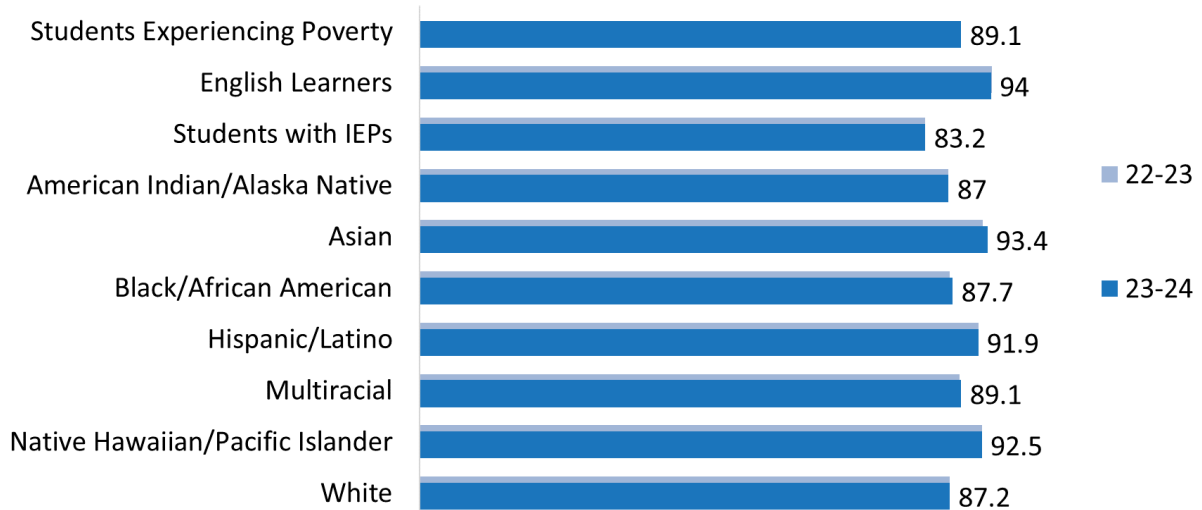


Mathematics



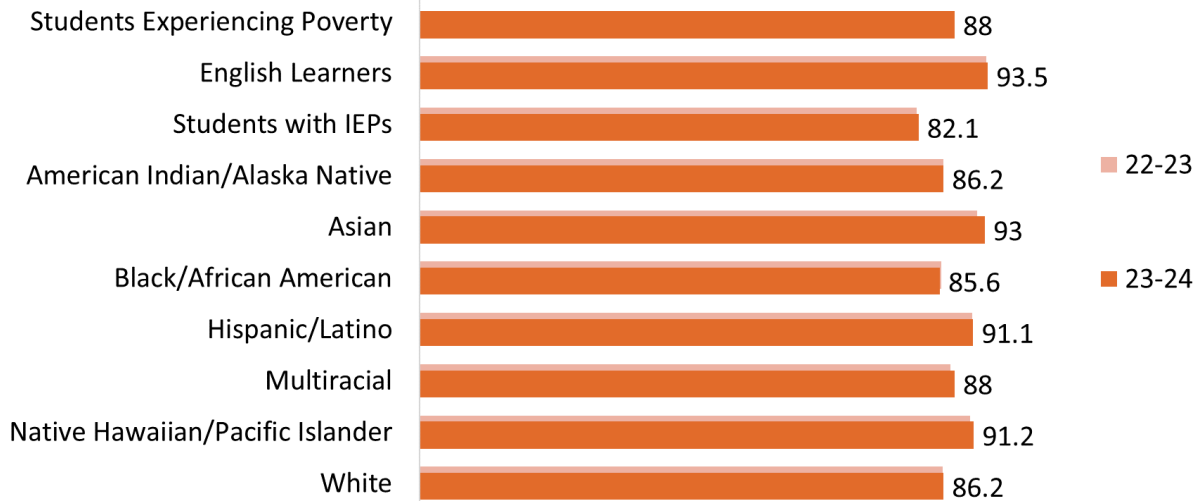
Participation by Student Group

English Language Arts



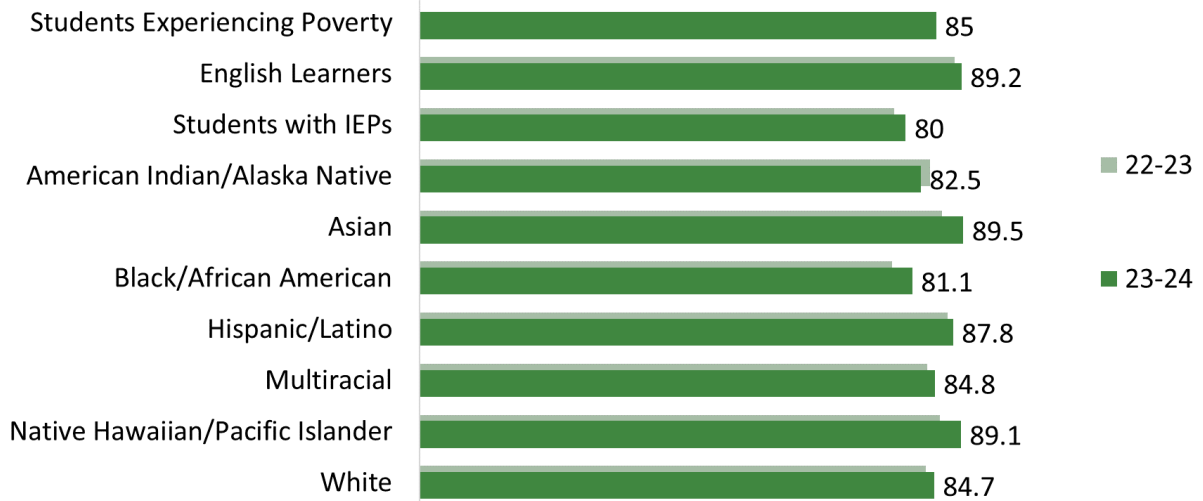
Participation by Student Group

Math



Participation by Student Group

Science



Participation Rates Table by Grade 2022 to 2024

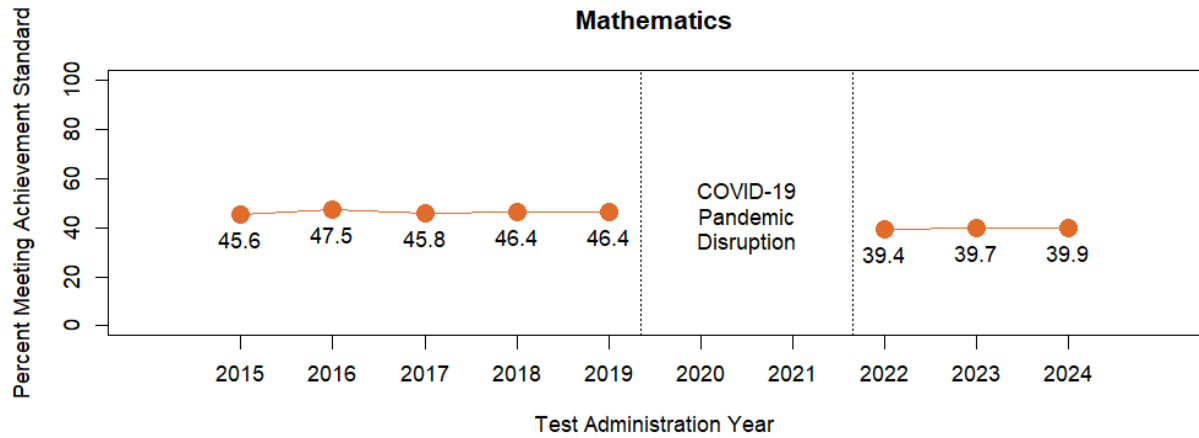
Participation Rates by Grade												
Grade	ELA				Math				Science			
	21-22	22-23	23-24	23/24 Chng	21-22	22-23	23-24	23/24 Chng	21-22	22-23	23-24	23/24 Chng
3	92.7	93.9	93.9	0.0	92.3	93.7	93.5	-0.2				
4	92.2	93.6	93.6	0.0	91.8	93.4	93.3	-0.1				
5	92.5	93.3	93.6	+0.3	92.0	93.0	93.5	+0.5	93.0	93.7	94.6	+0.9
6	90.8	92.4	91.9	-0.5	89.9	91.6	91.6	0.0				
7	88.5	90.1	90.6	+0.5	87.0	88.7	89.8	+1.1				
8	86.2	88.5	88.1	-0.4	84.4	86.8	87.0	+0.2	88.0	89.2	90.4	+1.2
11	59.9	70.5	71.5	+1.0	55.8	67.6	68.0	+0.4	63.1	70.2	72.5	+2.3
All	86.1	88.8	88.9	+0.1	84.7	87.7	87.9	+0.2	81.5	84.3	85.7	+1.4

Participation Rates Table by Student Group 2022 to 2024

Student Group	ELA				Math				Science			
	21-22	22-23	23-24	23/24 Chng	21-22	22-23	23-24	23/24 Chng	21-22	22-23	23-24	23/24 Chng
Students Experiencing Poverty			89.1				88.0				85.0	
English Learners	93.1	94.1	94.0	-0.1	91.7	93.3	93.5	+0.2	87.1	88.0	89.2	+1.2
Students with IEPs	80.8	83.2	83.2	0.0	79.2	81.8	82.1	+0.3	76.0	78.1	80.0	+1.9
American Indian/Alaska Native	84.2	87.0	87.0	0.0	82.9	86.2	86.2	0.0	79.1	84.0	82.5	-1.5
Asian	89.6	92.6	93.4	+0.8	88.6	91.8	93.0	+1.2	83.6	86.0	89.5	+3.5
Black/African American	83.4	87.2	87.7	+0.5	81.8	85.9	85.6	-0.3	74.7	77.8	81.1	+3.3
Hispanic/Latino	89.9	92.0	91.9	-0.1	88.4	91.0	91.1	+0.1	84.9	86.9	87.8	+0.9
Multiracial	85.2	88.8	89.1	+0.3	84.0	87.4	88.0	+0.6	80.2	83.5	84.8	+1.3
Native Hawaiian/Pacific Islander	89.1	92.5	92.5	0.0	87.5	90.6	91.2	+0.6	83.4	85.6	89.1	+3.5
White	84.4	87.2	87.2	0.0	83.0	86.1	86.2	+0.1	80.4	83.3	84.7	+1.4

ACHIEVEMENT - MATHEMATICS

3rd Grade Achievement in Math by Year - All Students

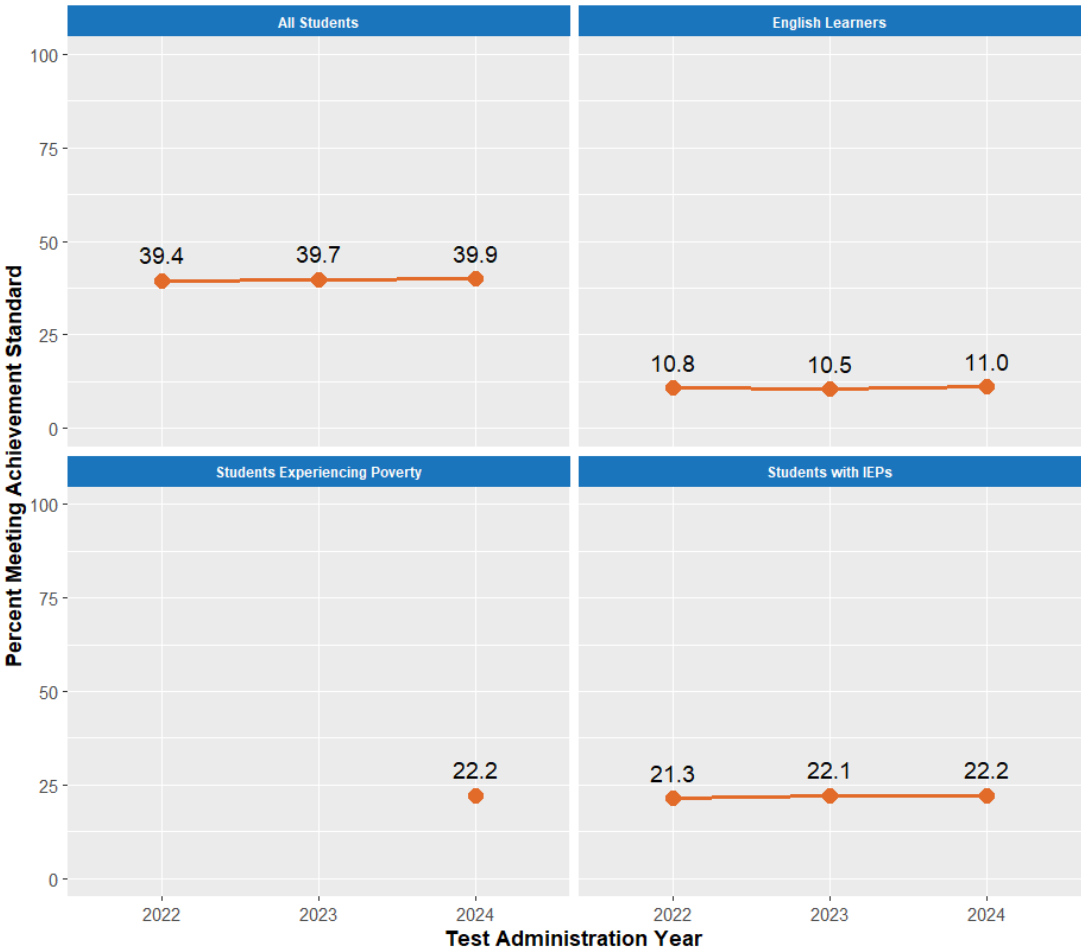


3rd Grade Mathematics Achievement by Racial/Ethnic Identity



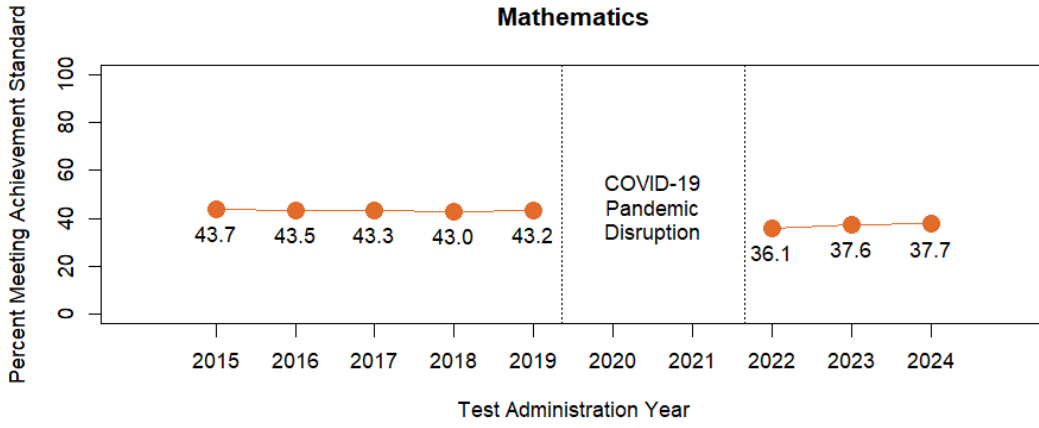
Full data available in [Supplemental Data Tables](#)

3rd Grade Mathematics Achievement for English Learners, Students Experiencing Poverty, and Students with IEPs

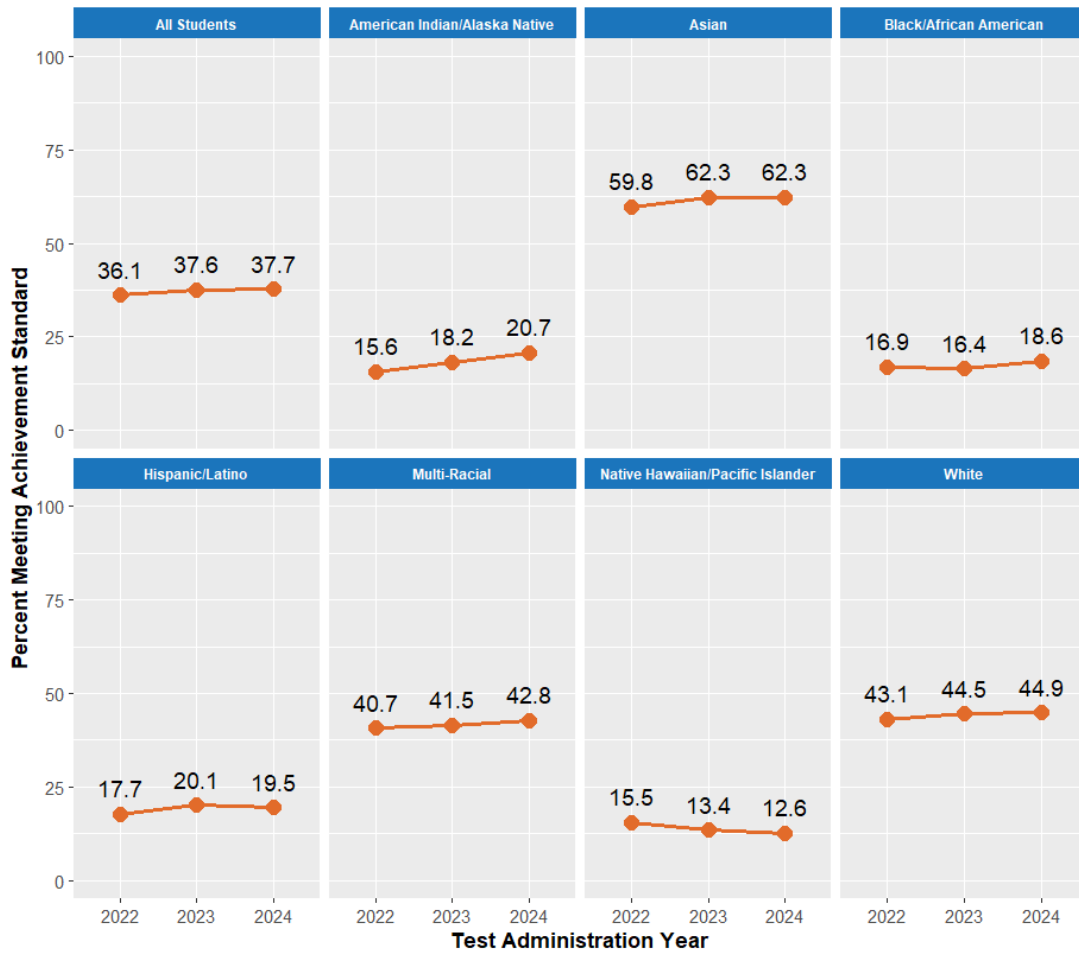


Full data available in [Supplemental Data Tables](#)

4th Grade Mathematics Achievement Year - All Students

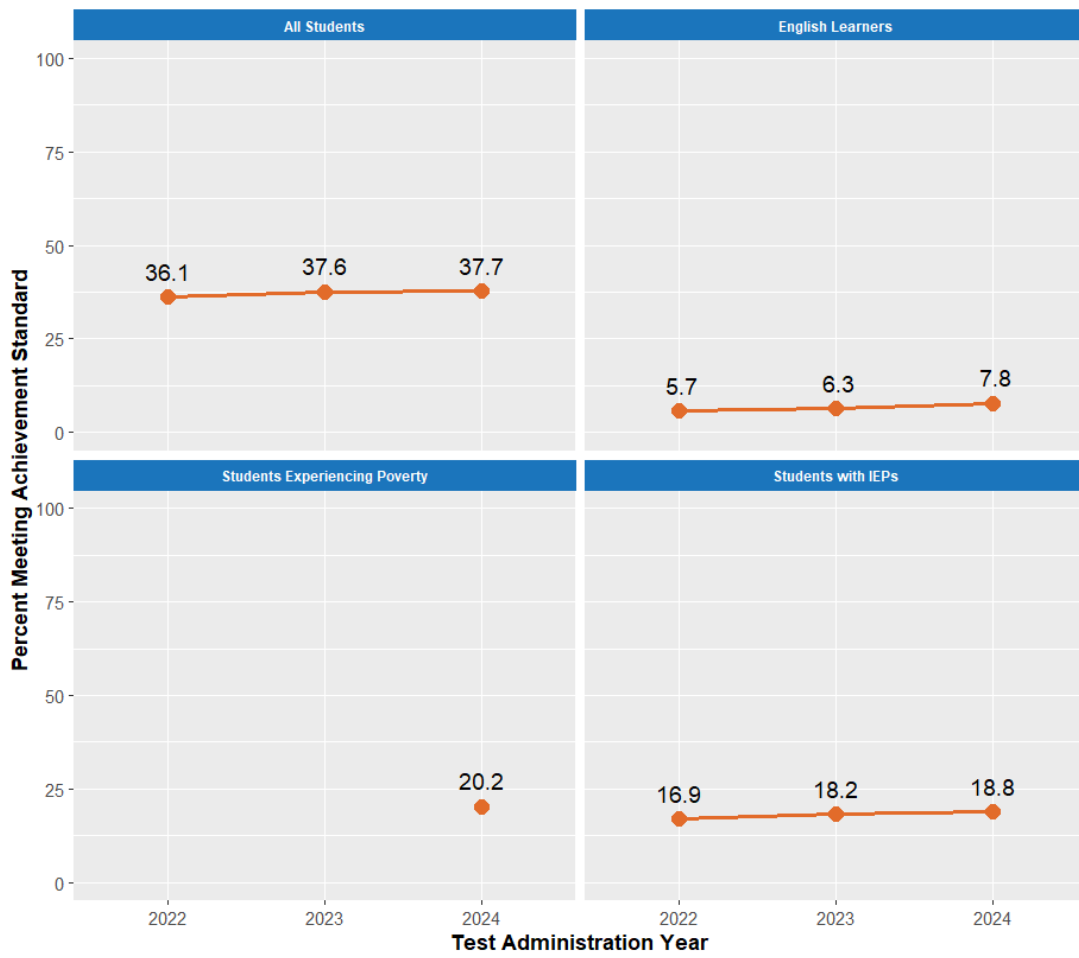


4th Grade Mathematics Achievement by Racial/Ethnic Identity



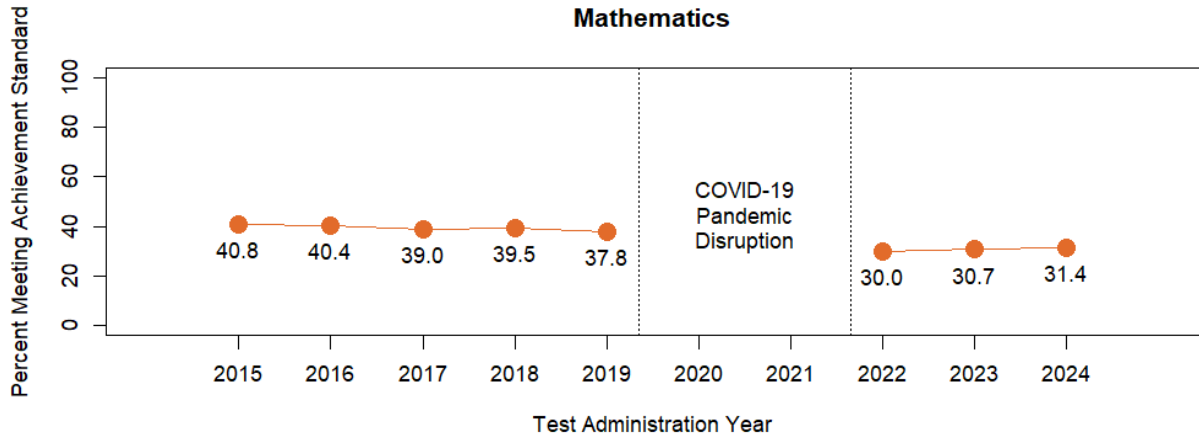
Full data available in [Supplemental Data Tables](#)

4th Grade Mathematics Achievement for English Learners, Students Experiencing Poverty, and Students with IEPs



Full data available in [Supplemental Data Tables](#)

5th Grade Achievement in Math by Year - All Students

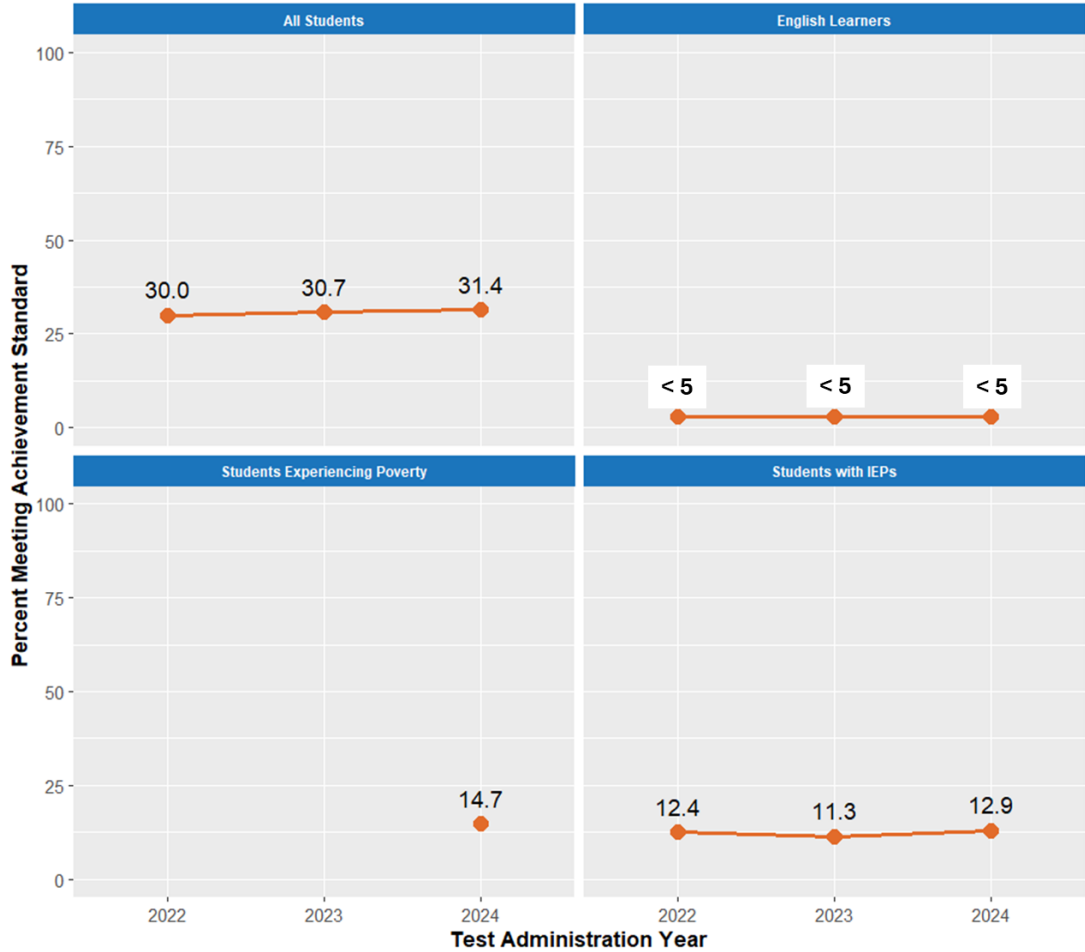


5th Grade Mathematics Achievement by Racial/Ethnic Identity



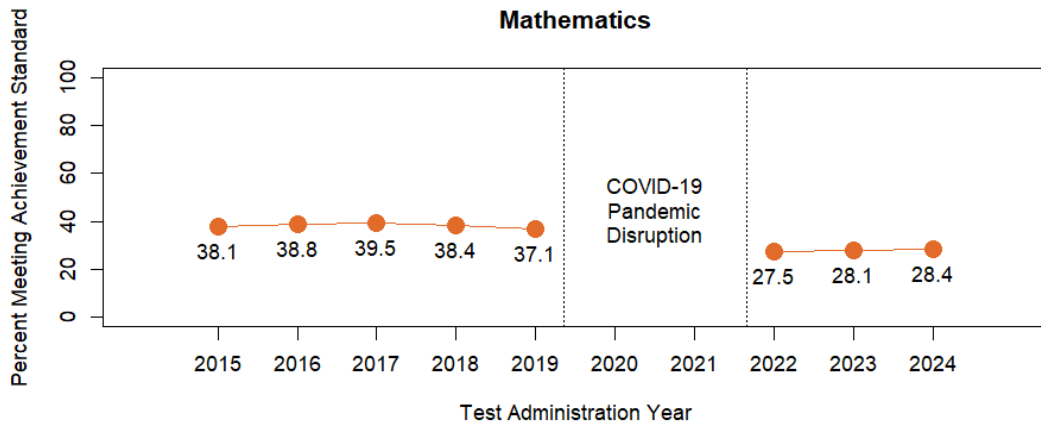
Full data available in [Supplemental Data Tables](#)

5th Grade Mathematics Achievement for English Learners, Students Experiencing Poverty, and Students with IEPs

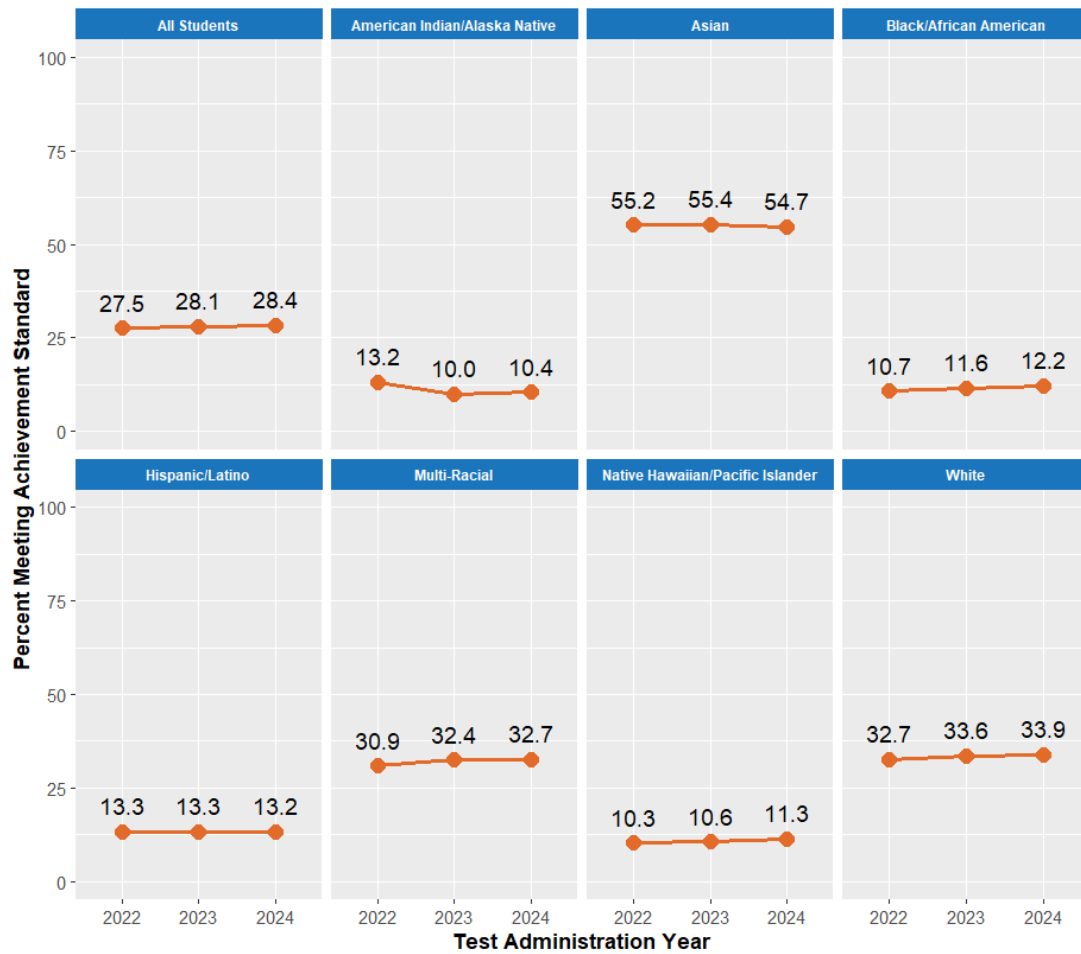


Full data available in [Supplemental Data Tables](#)

6th Grade Mathematics Achievement by Year - All Students

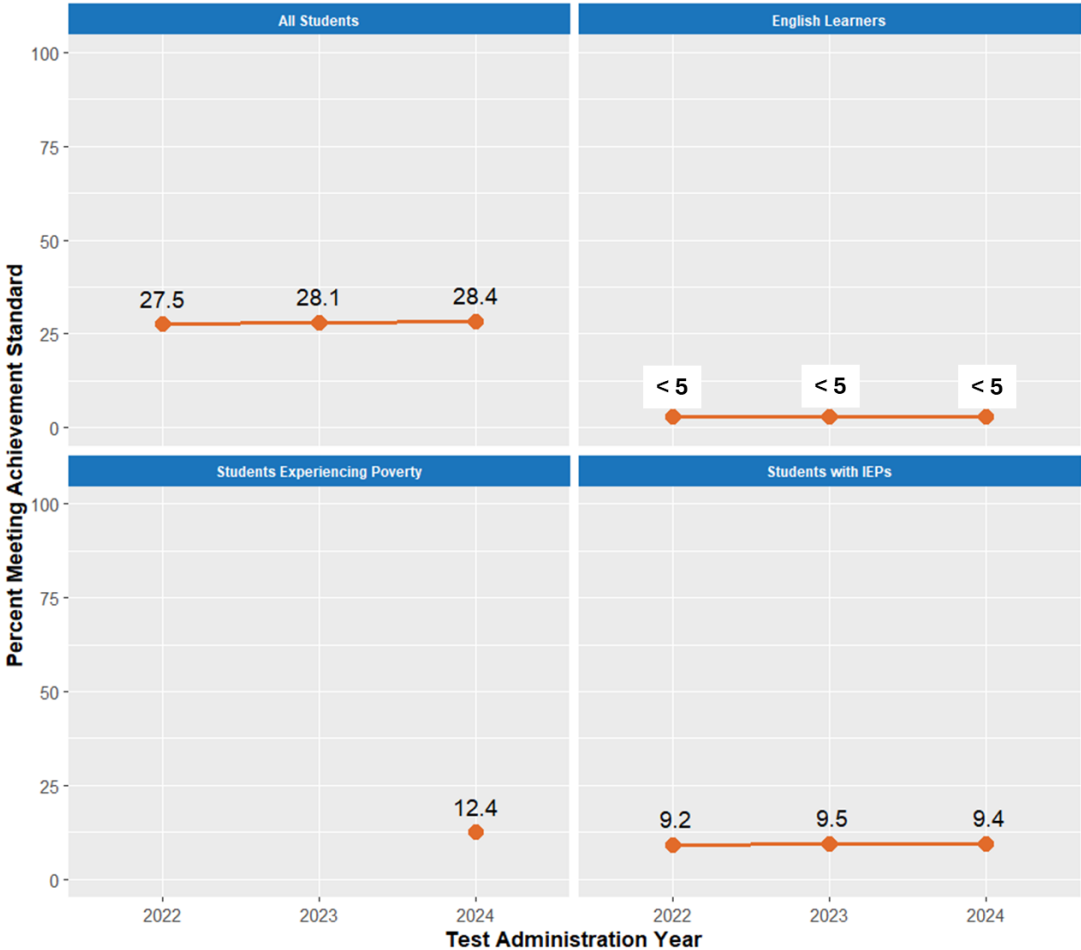


6th Grade Mathematics Achievement by Racial/Ethnic Identity



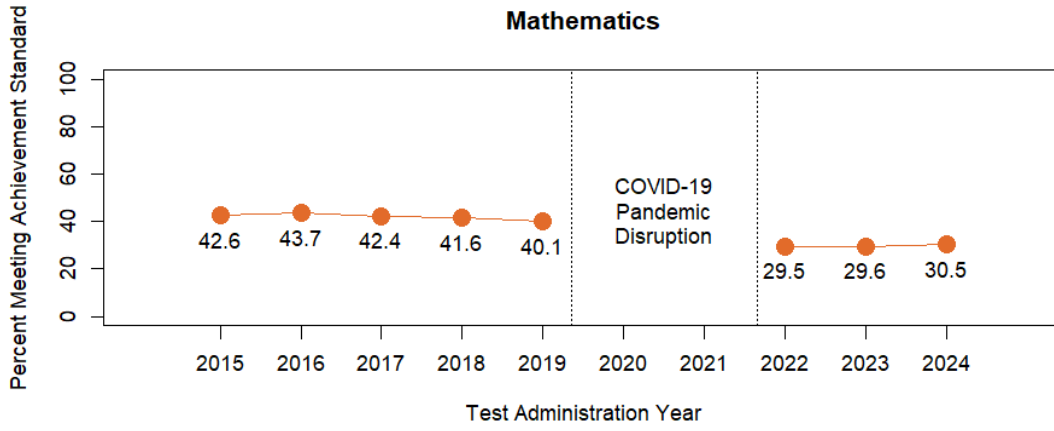
Full data available in [Supplemental Data Tables](#)

6th Grade Mathematics Achievement for English Learners, Students Experiencing Poverty, and Students with IEPs

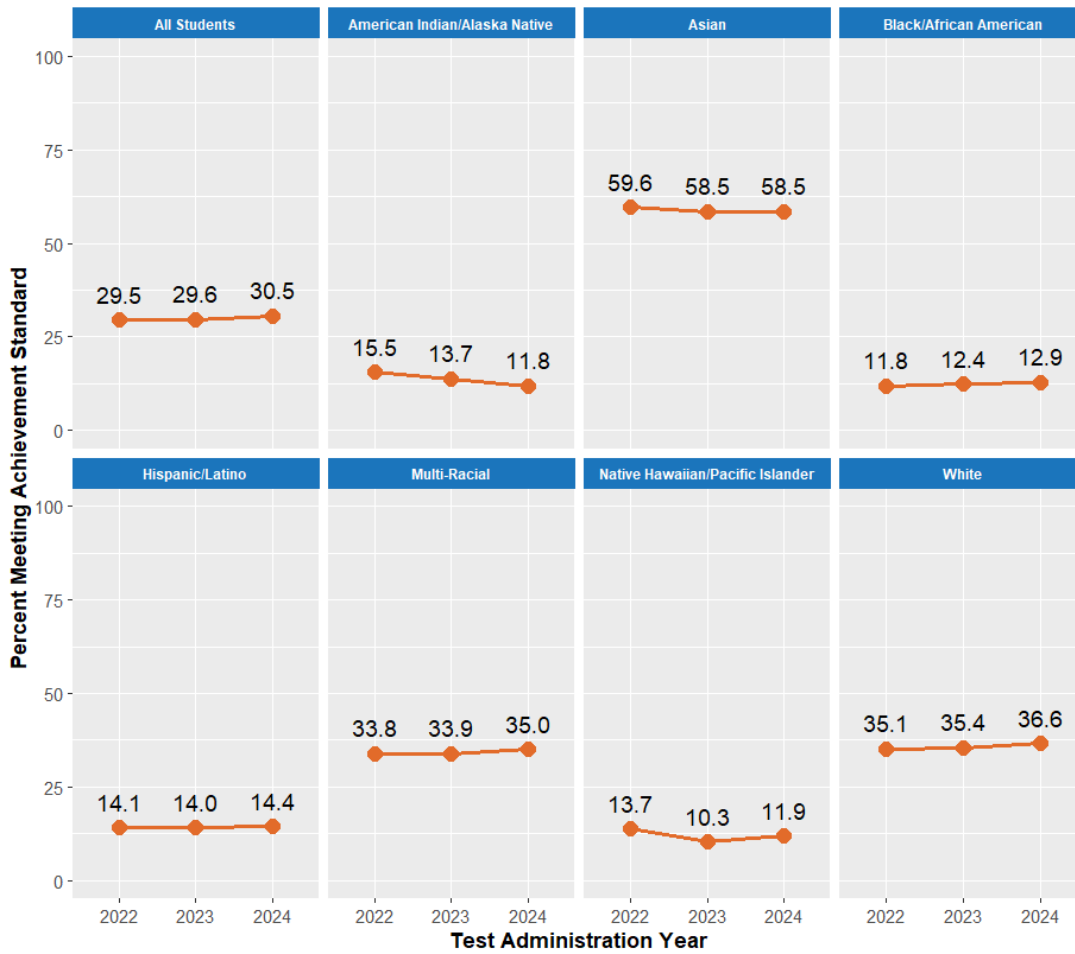


Full data available in [Supplemental Data Tables](#)

7th Grade Mathematics Achievement by Year - All Students

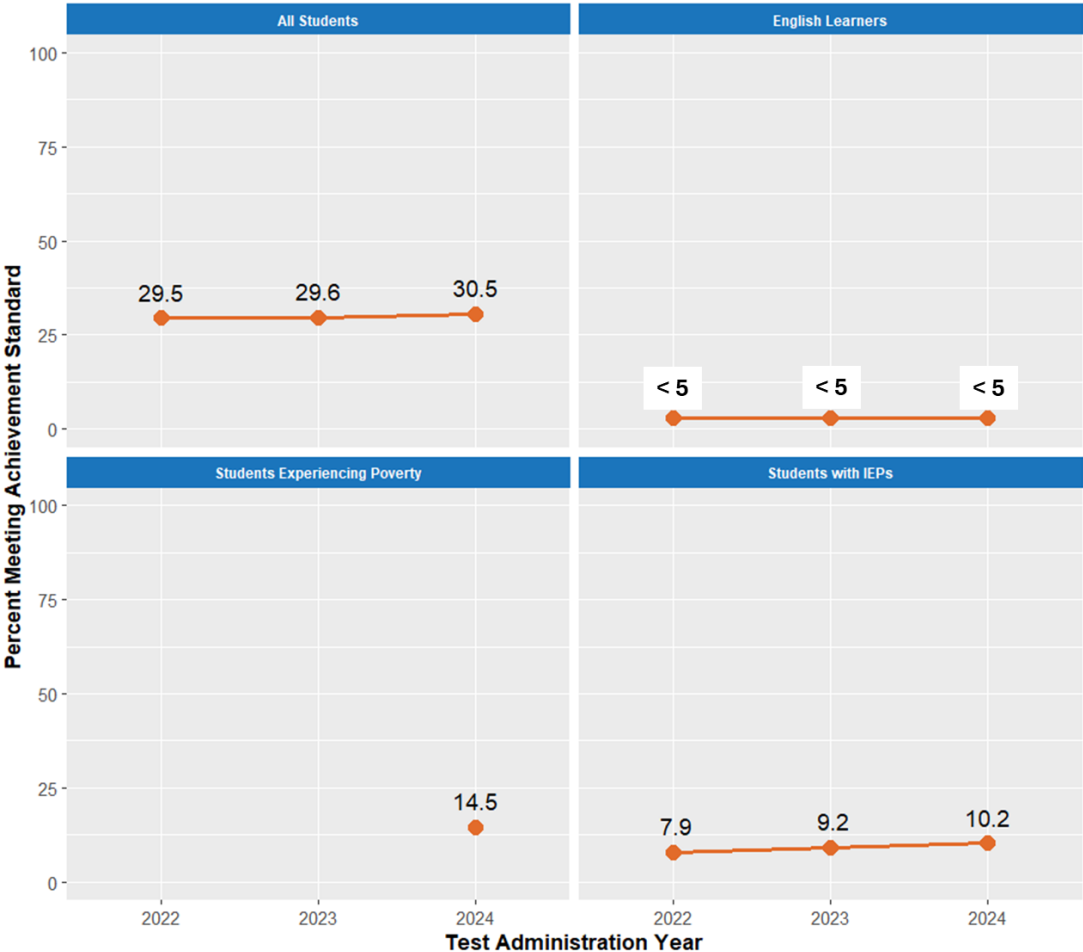


7th Grade Mathematics Achievement by Racial/Ethnic Identity



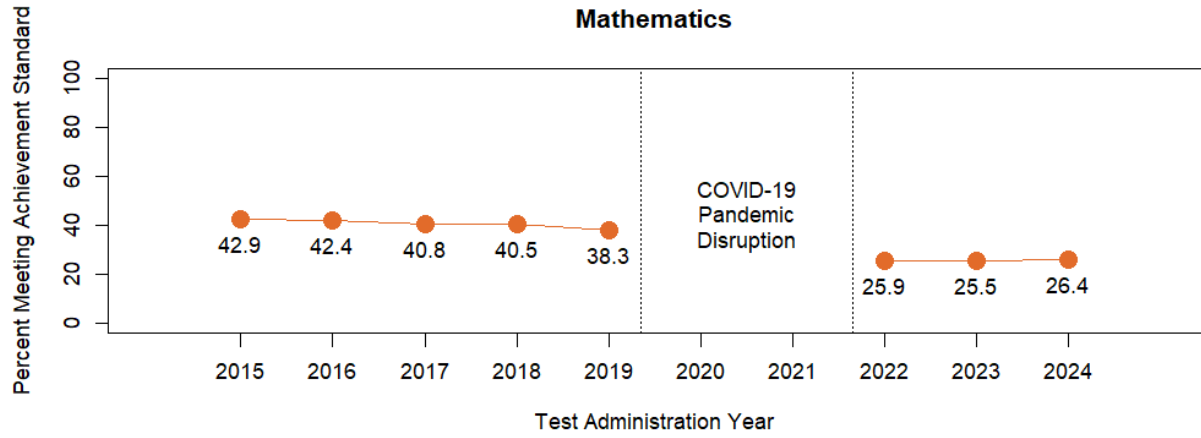
Full data available in [Supplemental Data Tables](#)

7th Grade Mathematics Achievement for English Learners, Students Experiencing Poverty, and Students with IEPs

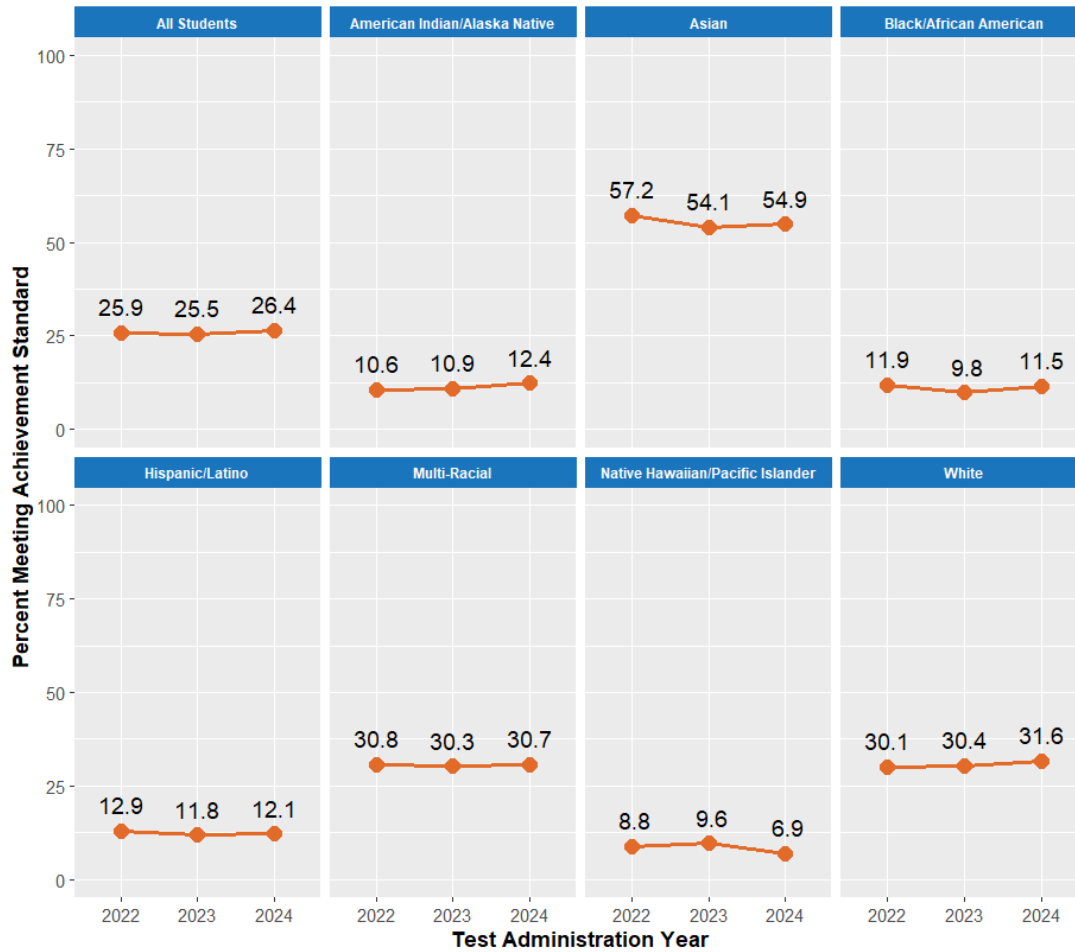


Full data available in [Supplemental Data Tables](#)

8th Grade Achievement in Math by Year - All Students

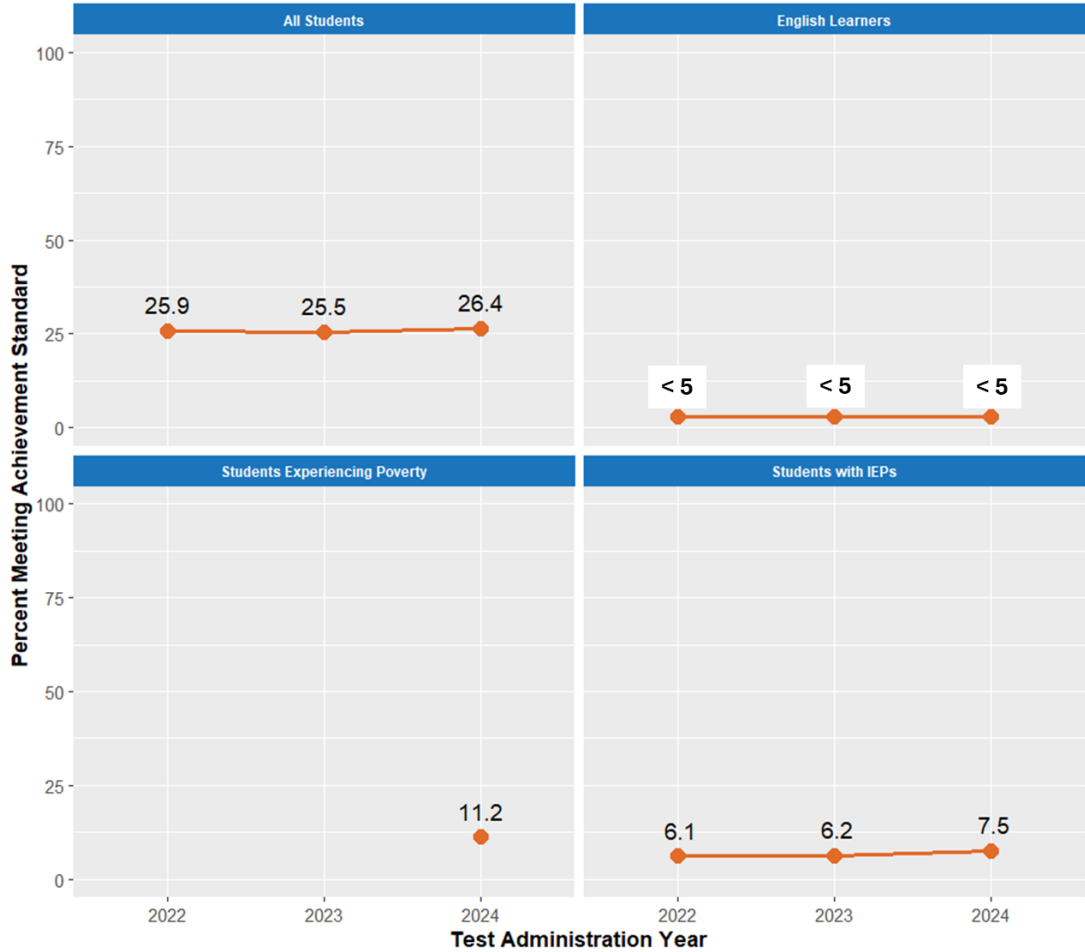


8th Grade Mathematics Achievement by Racial/Ethnic Identity



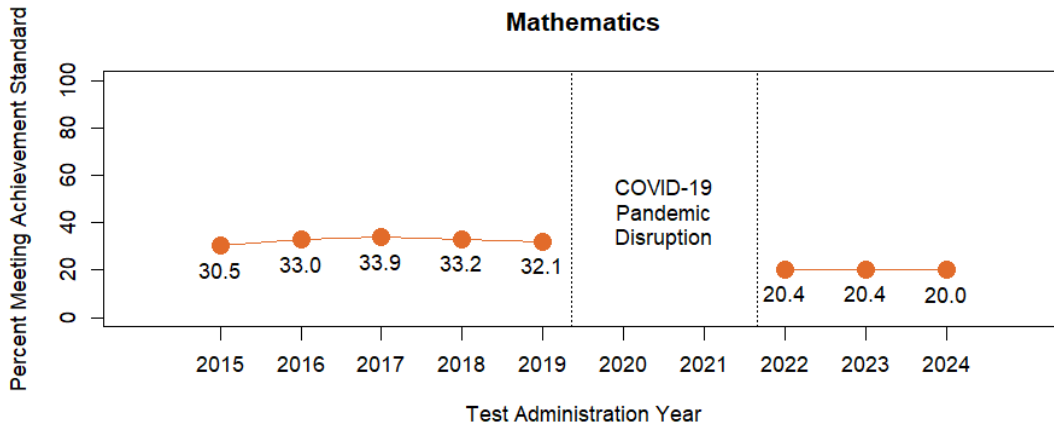
Full data available in [Supplemental Data Tables](#)

8th Grade Mathematics Achievement for English Learners, Students Experiencing Poverty, and Students with IEPs

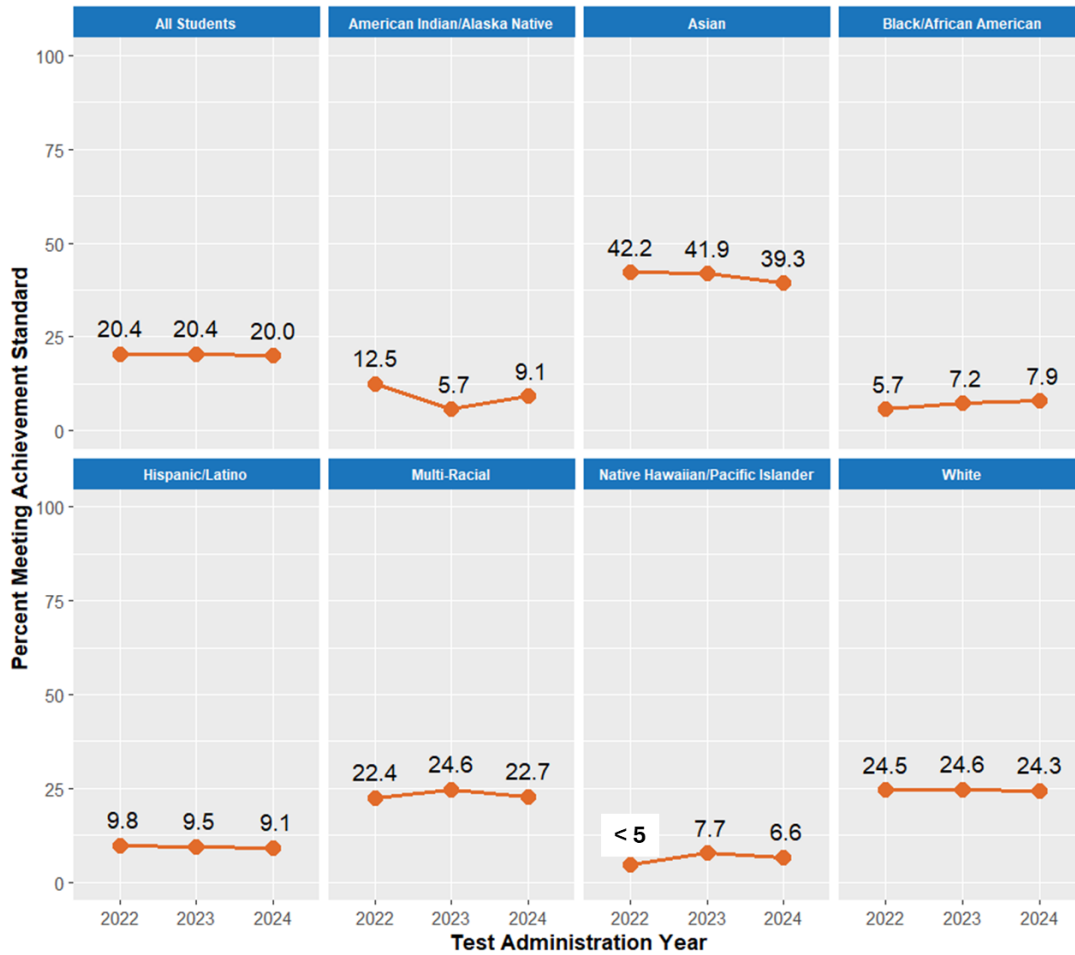


Full data available in [Supplemental Data Tables](#)

11th Grade Achievement in Mathematics by Year - All Students

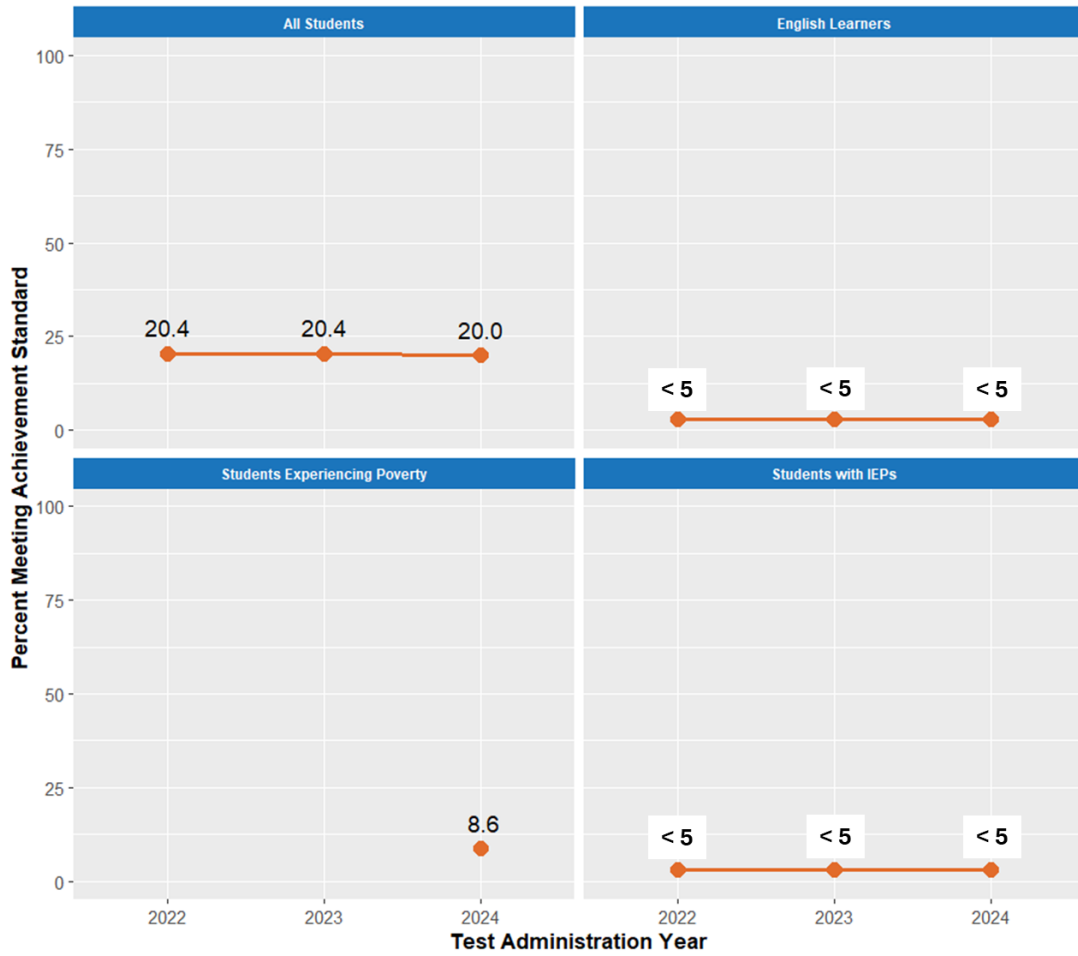


11th Grade Mathematics Achievement by Racial/Ethnic Identity



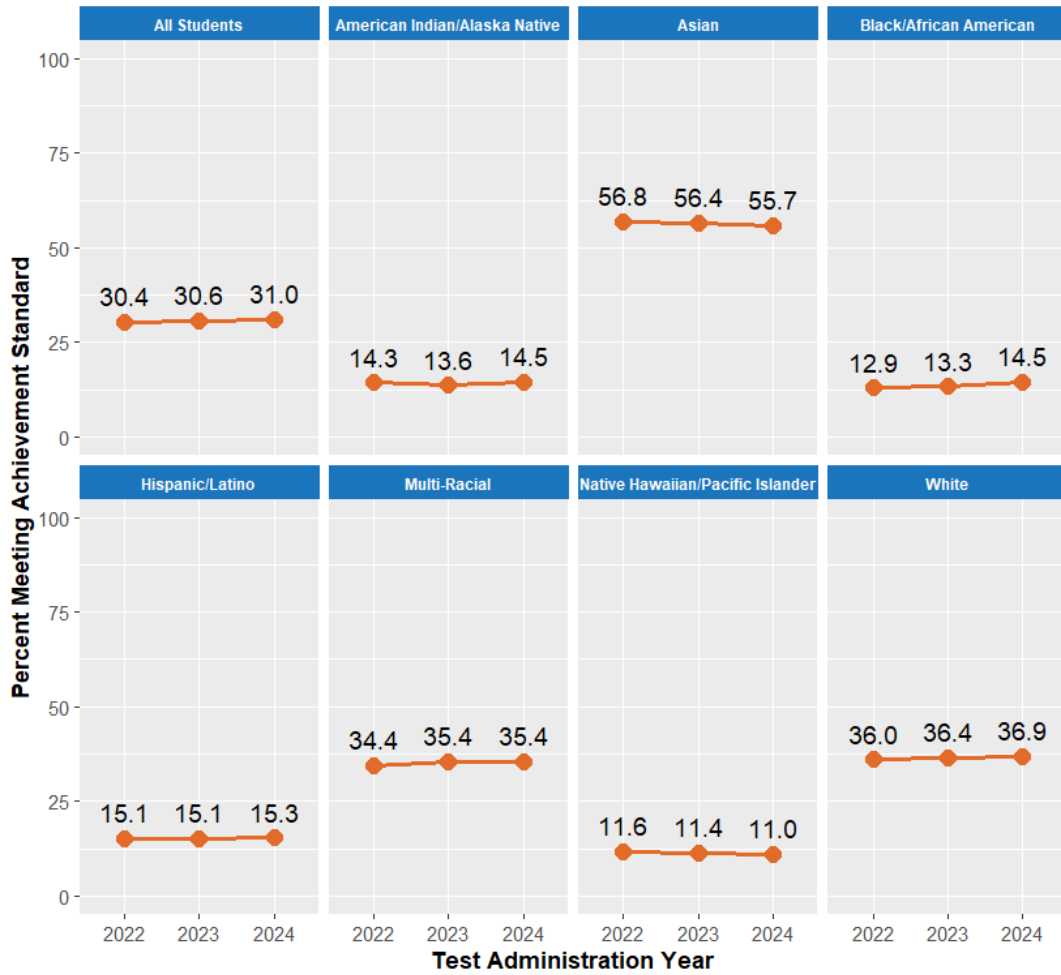
Full data available in [Supplemental Data Tables](#)

11th Grade Mathematics Achievement for English Learners, Students Experiencing Poverty, and Students with IEPs



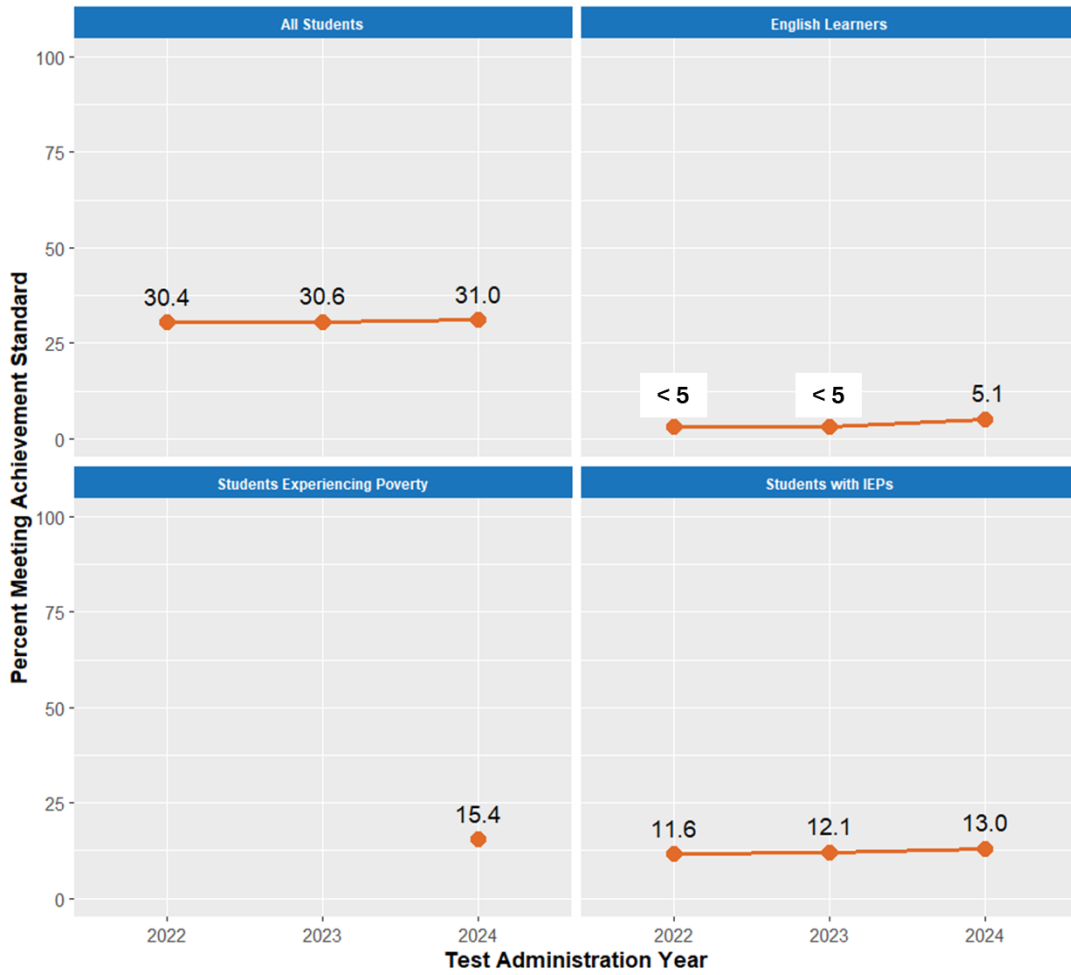
Full data available in [Supplemental Data Tables](#)

Math Achievement by Racial/Ethnic Identity - All Grades



Full data available in [Supplemental Data Tables](#)

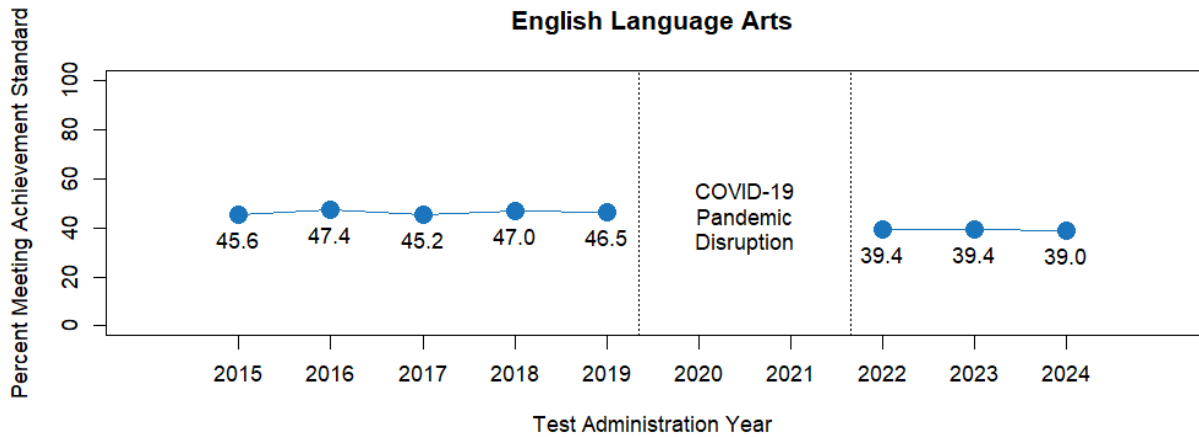
Math Achievement for English Learners, Students Experiencing Poverty, and Students with IEPs - All Grades



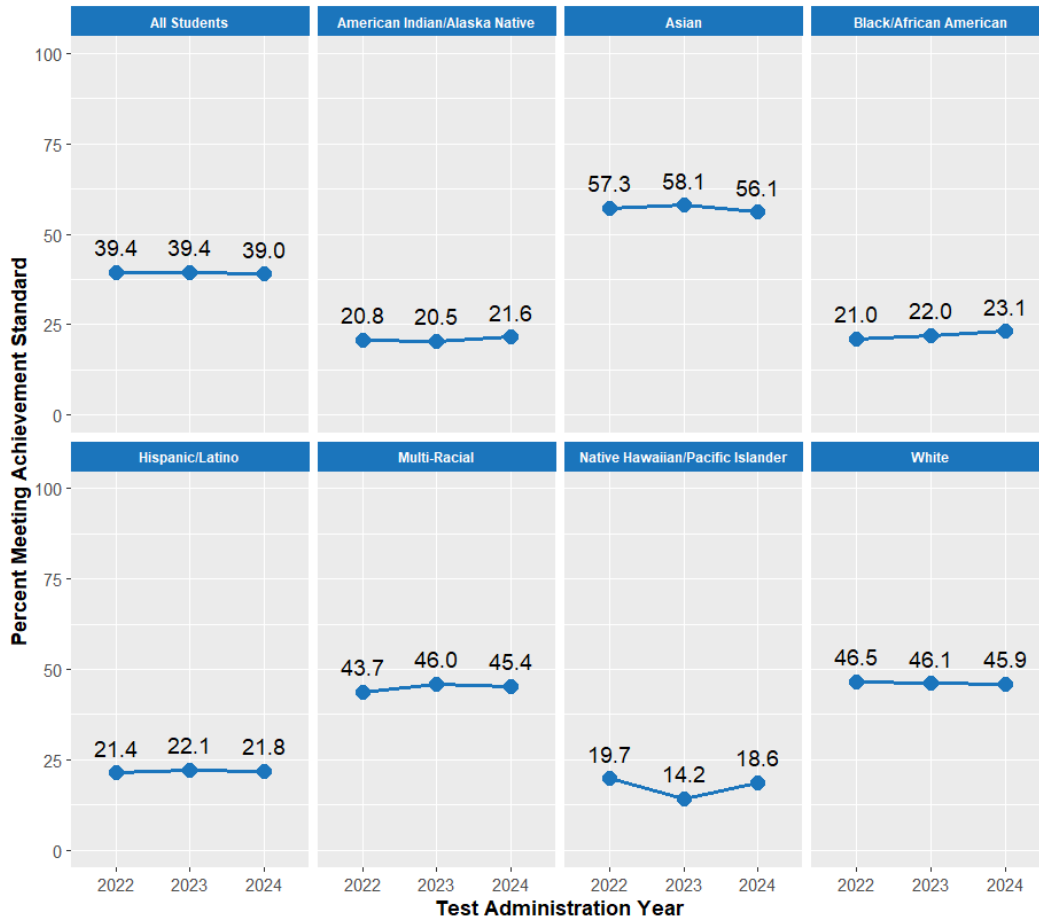
Full data available in [Supplemental Data Tables](#)

ACHIEVEMENT - ENGLISH LANGUAGE ARTS (ELA)

3rd Grade Achievement in ELA by Year - All Students

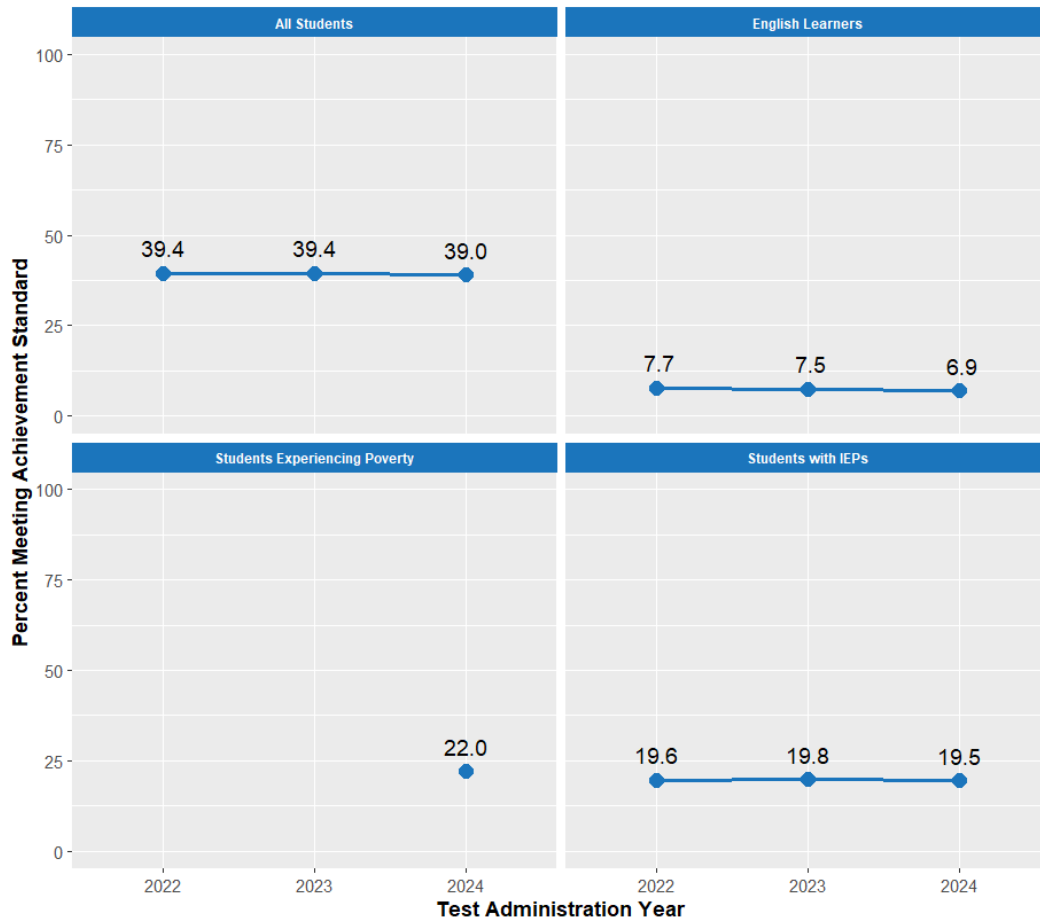


3rd Grade English Language Arts Achievement by Racial/Ethnic Identity



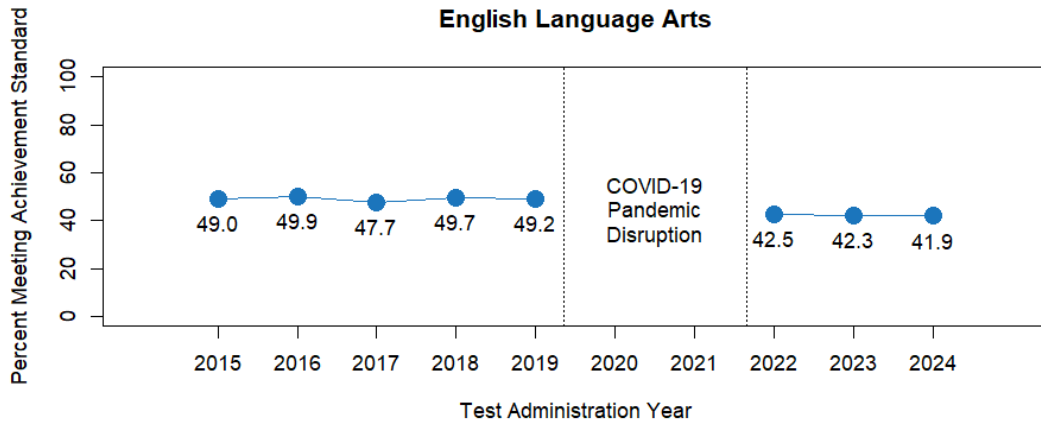
Full data available in [Supplemental Data Tables](#)

3rd Grade English Language Arts Achievement for English Learners, Students Experiencing Poverty, and Students with IEPs

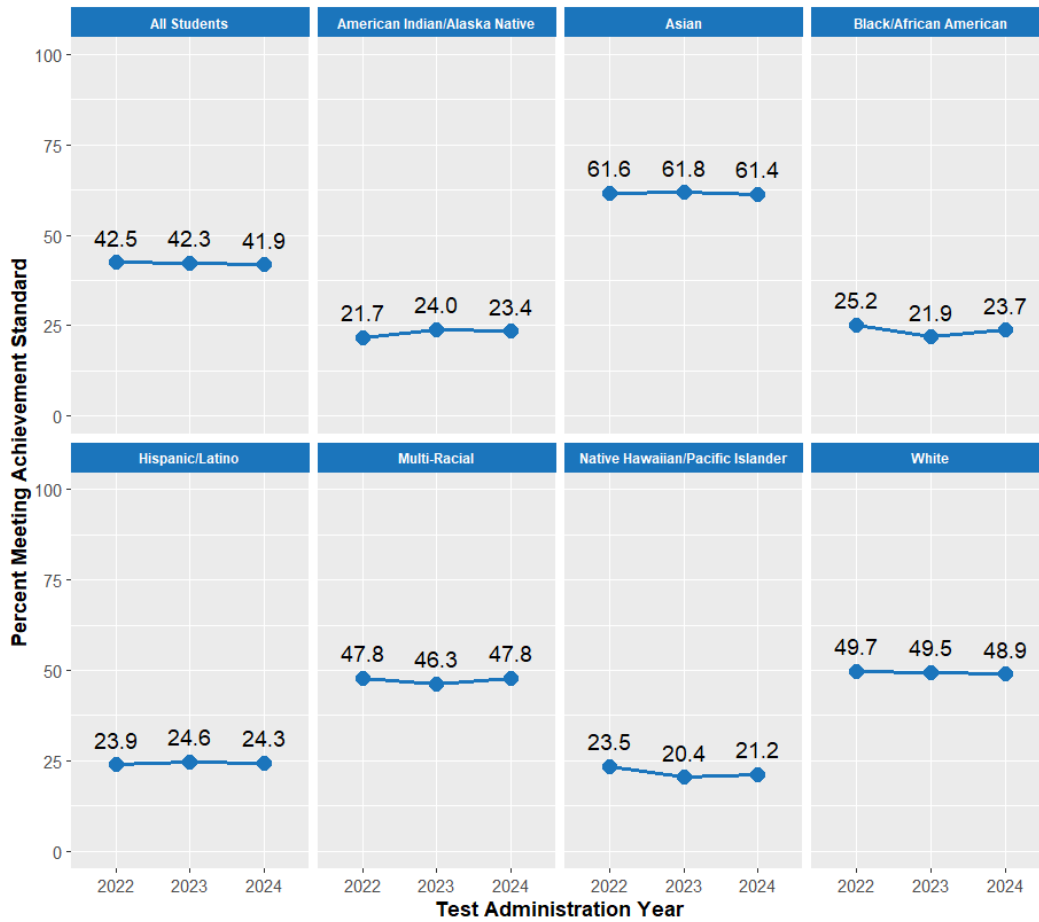


Full data available in [Supplemental Data Tables](#)

4th Grade Achievement in ELA by Year - All Students

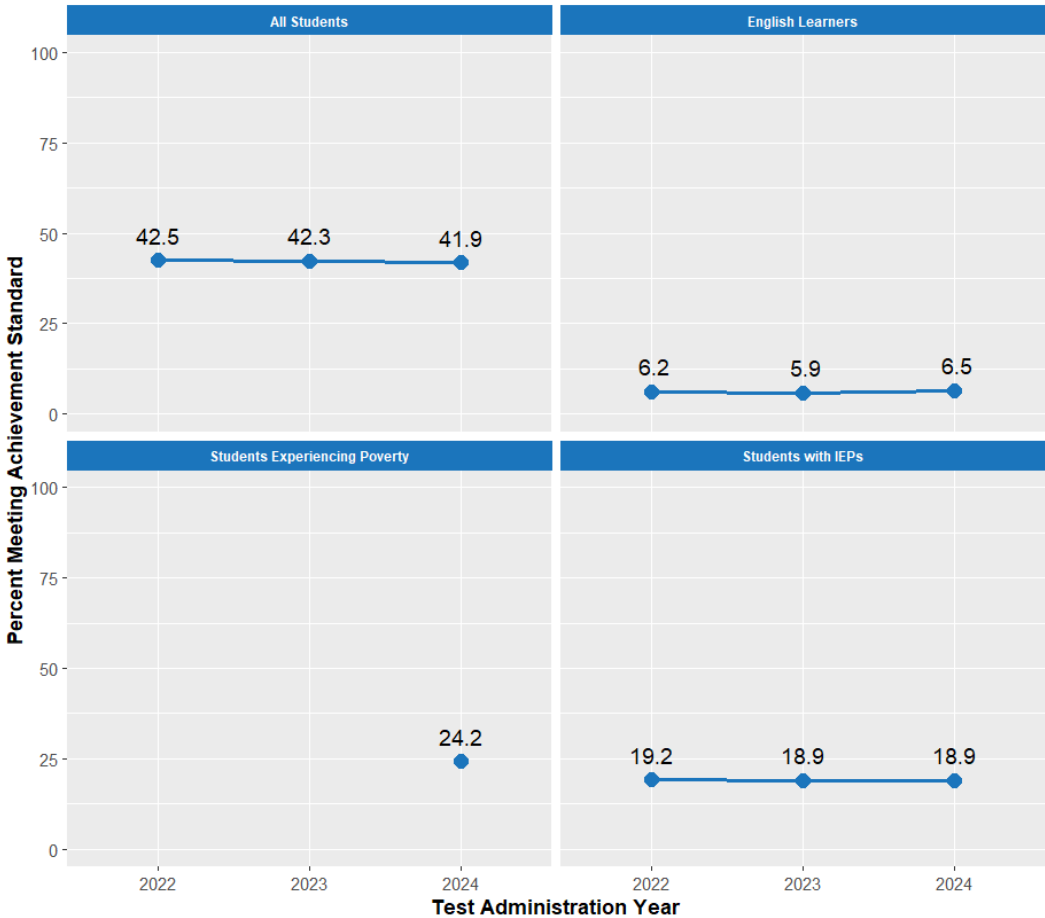


4th Grade English Language Arts Achievement by Racial/Ethnic Identity



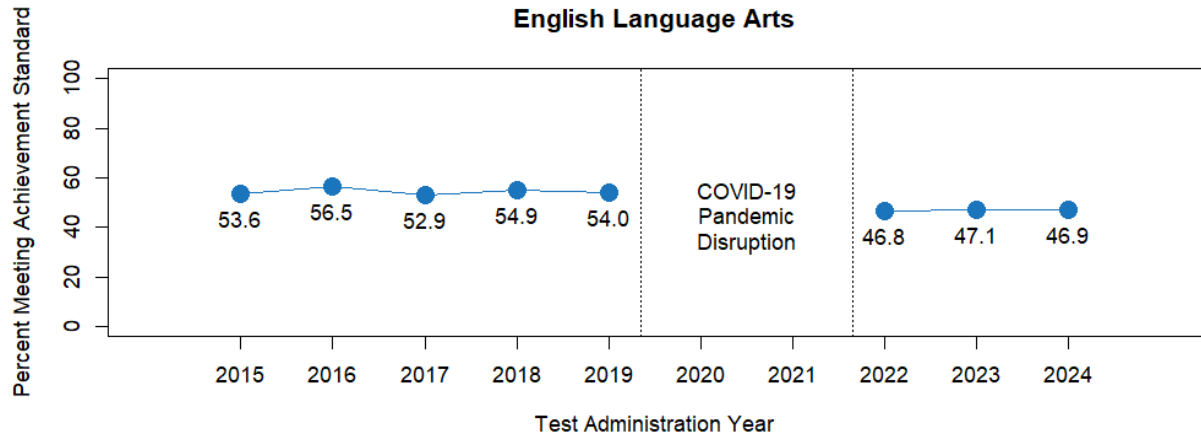
Full data available in [Supplemental Data Tables](#)

4th Grade English Language Arts Achievement for English Learners, Students Experiencing Poverty, and Students with IEPs

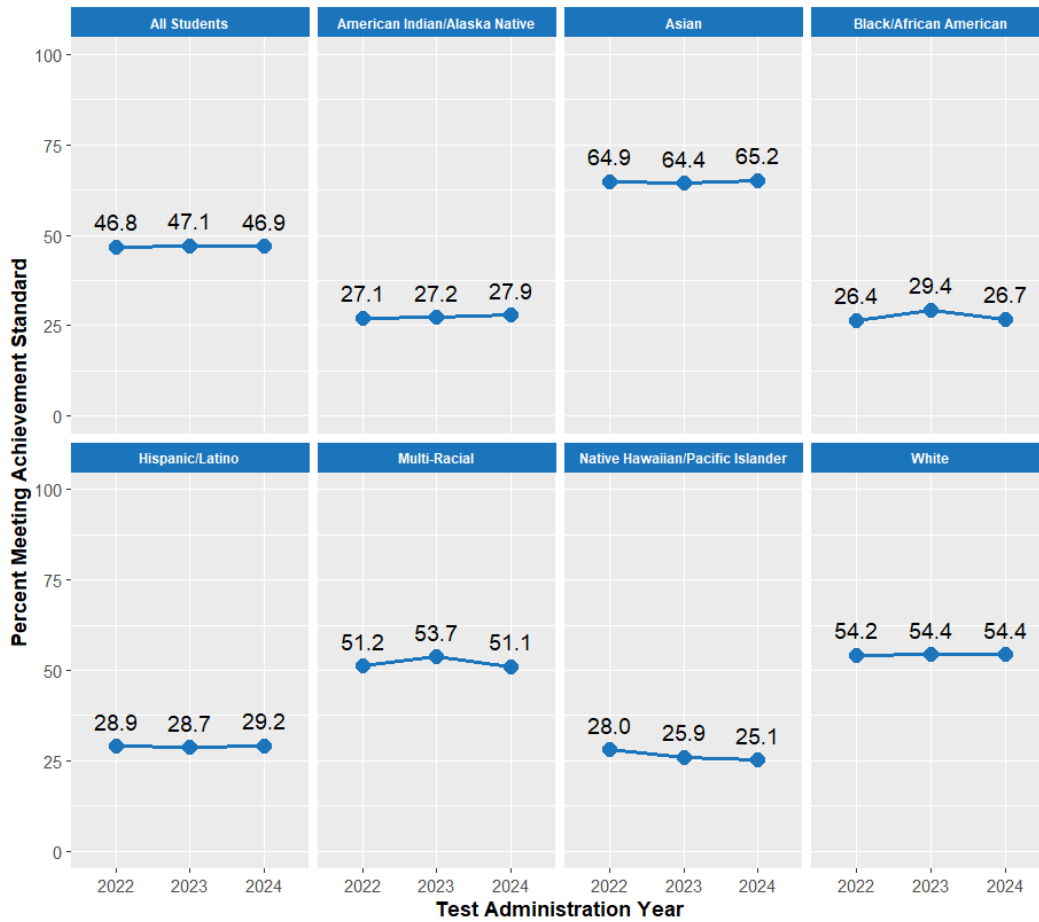


Full data available in [Supplemental Data Tables](#)

5th Grade Achievement in ELA by Year - All Students

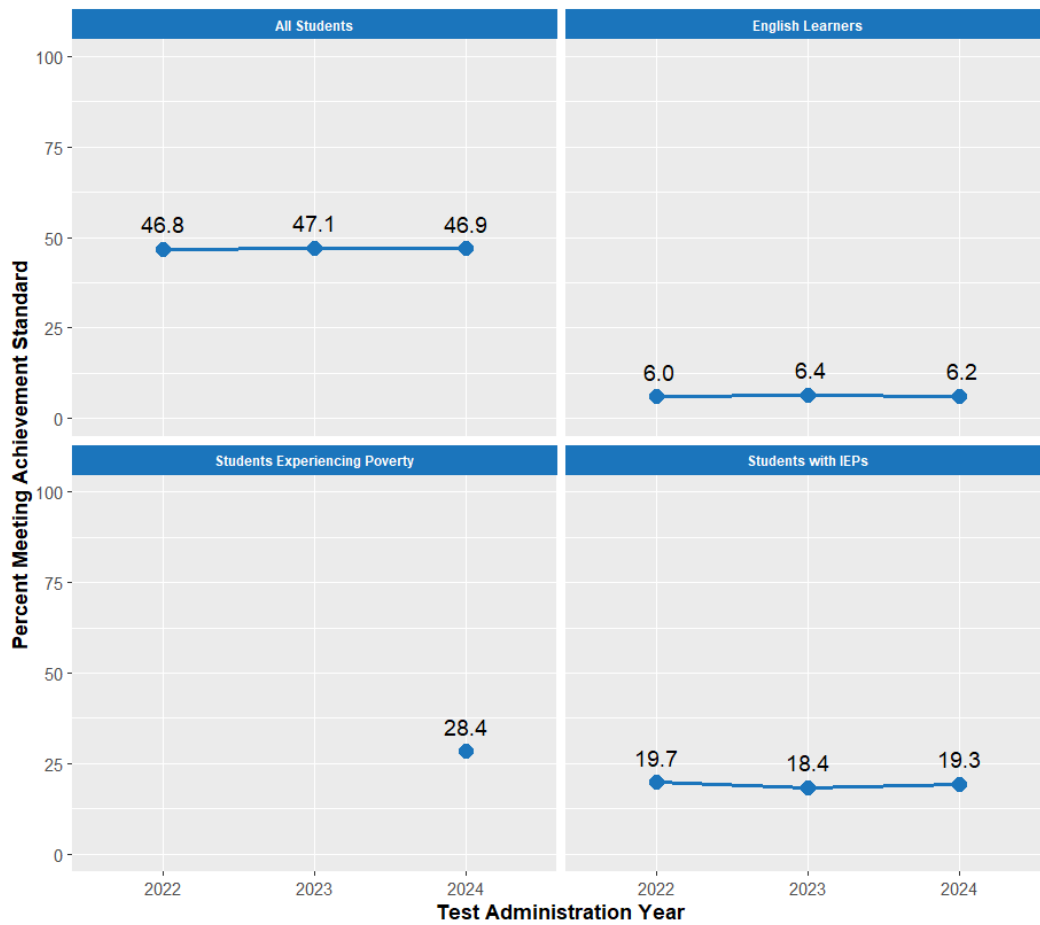


5th Grade English Language Arts Achievement by Racial/Ethnic Identity



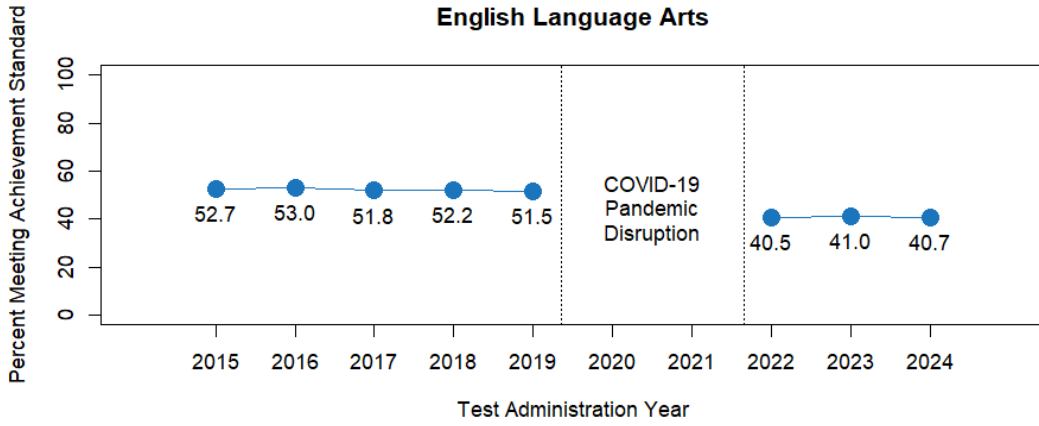
Full data available in [Supplemental Data Tables](#)

5th Grade English Language Arts Achievement for English Learners, Students Experiencing Poverty, and Students with IEPs

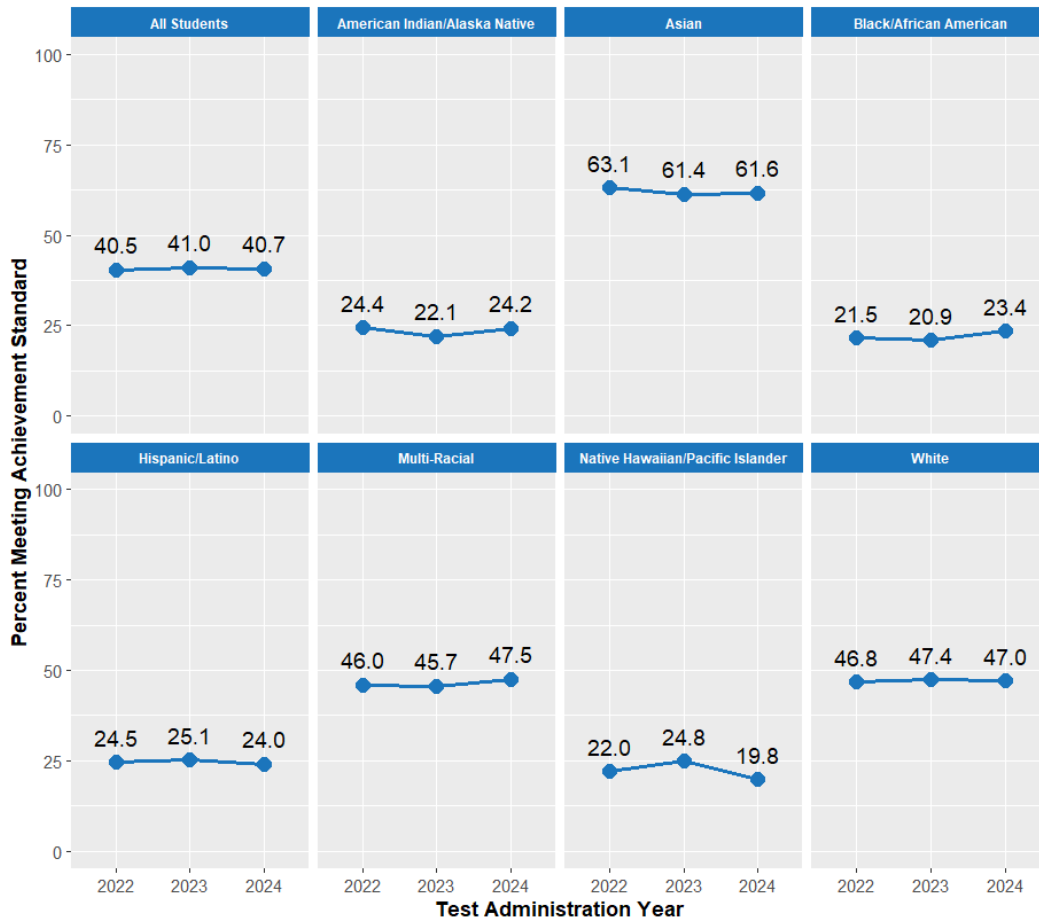


Full data available in [Supplemental Data Tables](#)

6th Grade Achievement in ELA by Year - All Students

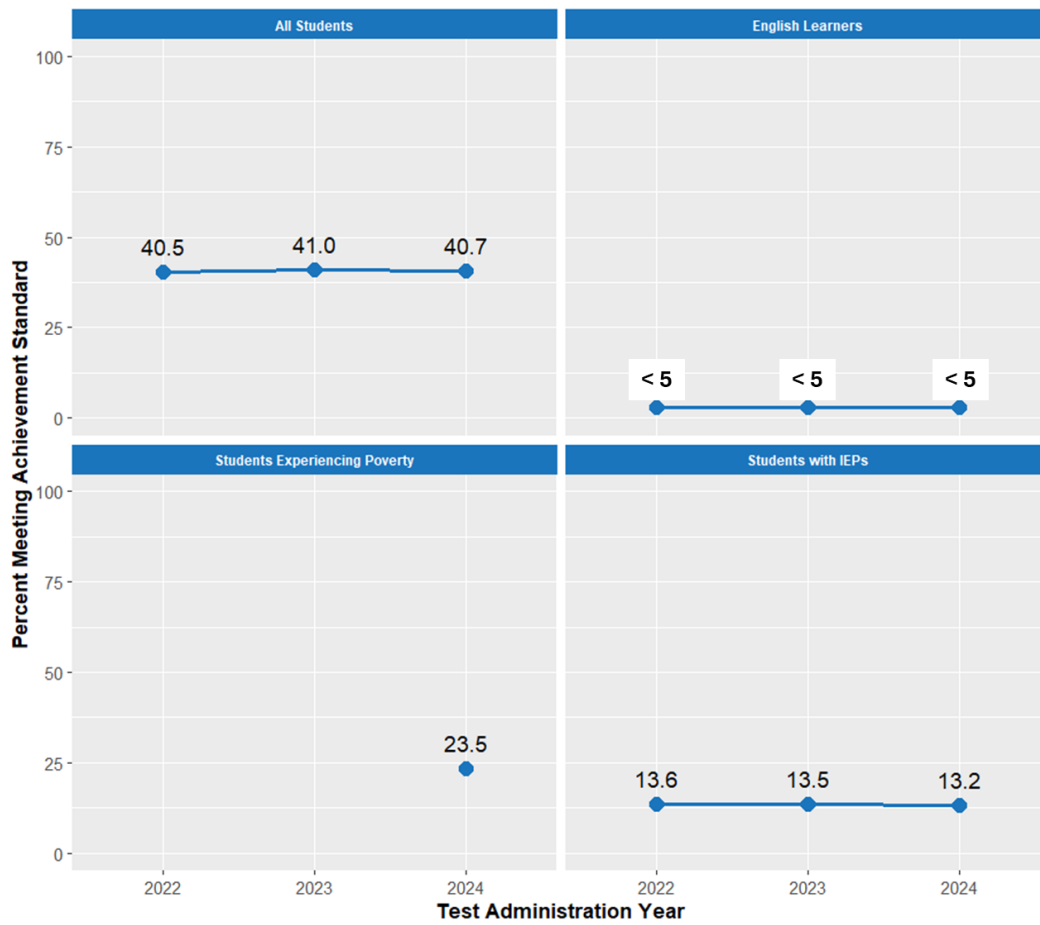


6th Grade English Language Arts Achievement by Racial/Ethnic Identity



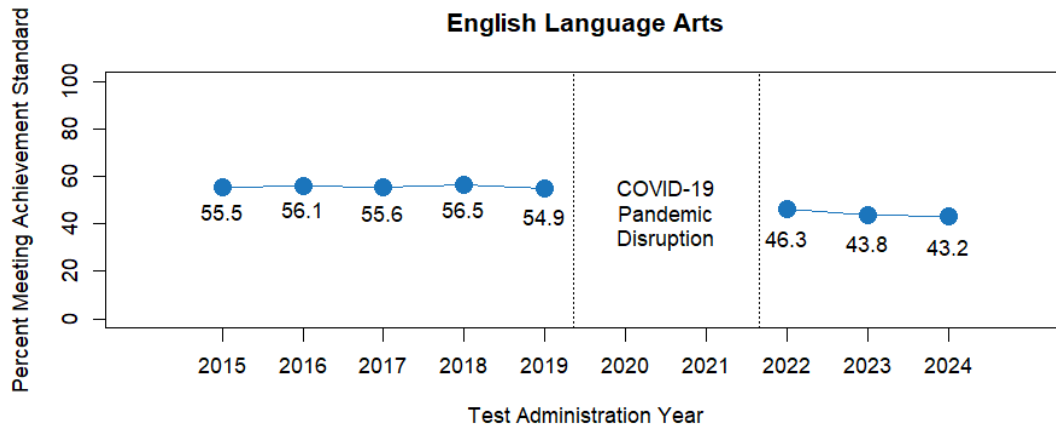
Full data available in [Supplemental Data Tables](#)

6th Grade English Language Arts Achievement for English Learners, Students Experiencing Poverty, and Students with IEPs

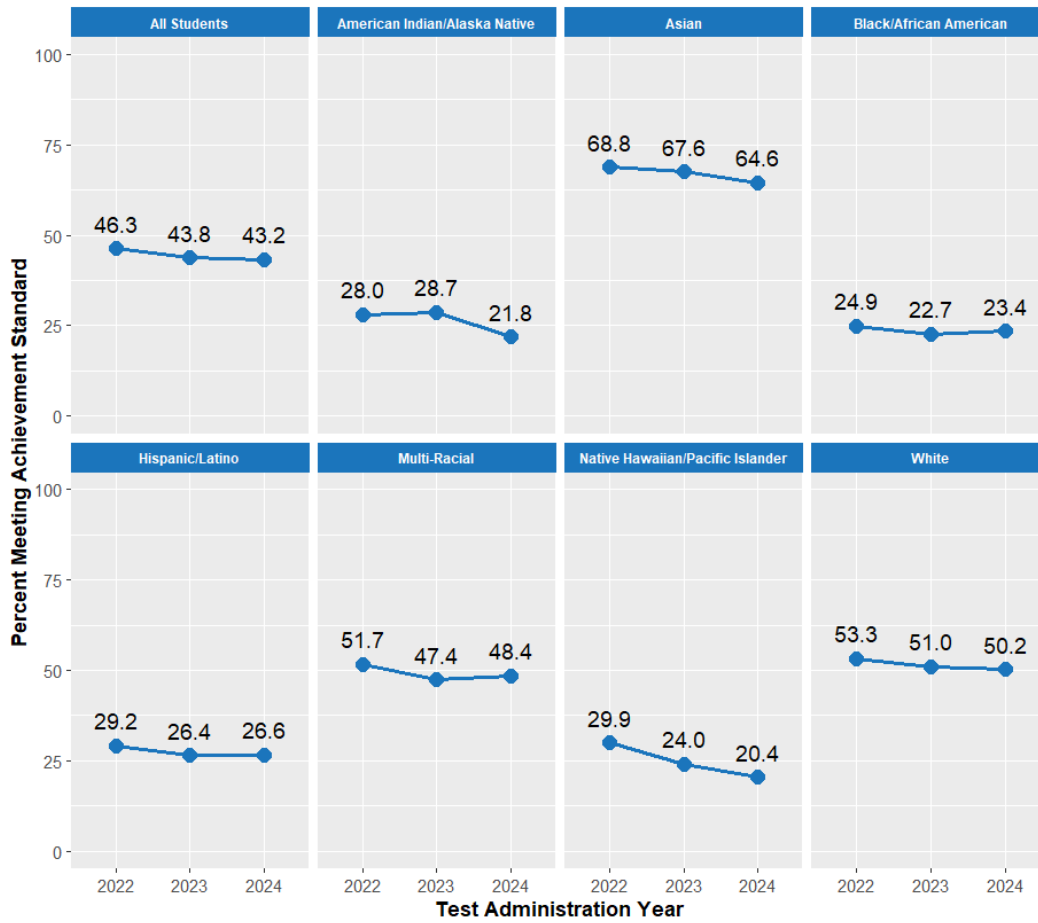


Full data available in [Supplemental Data Tables](#)

7th Grade Achievement in ELA by Year - All Students

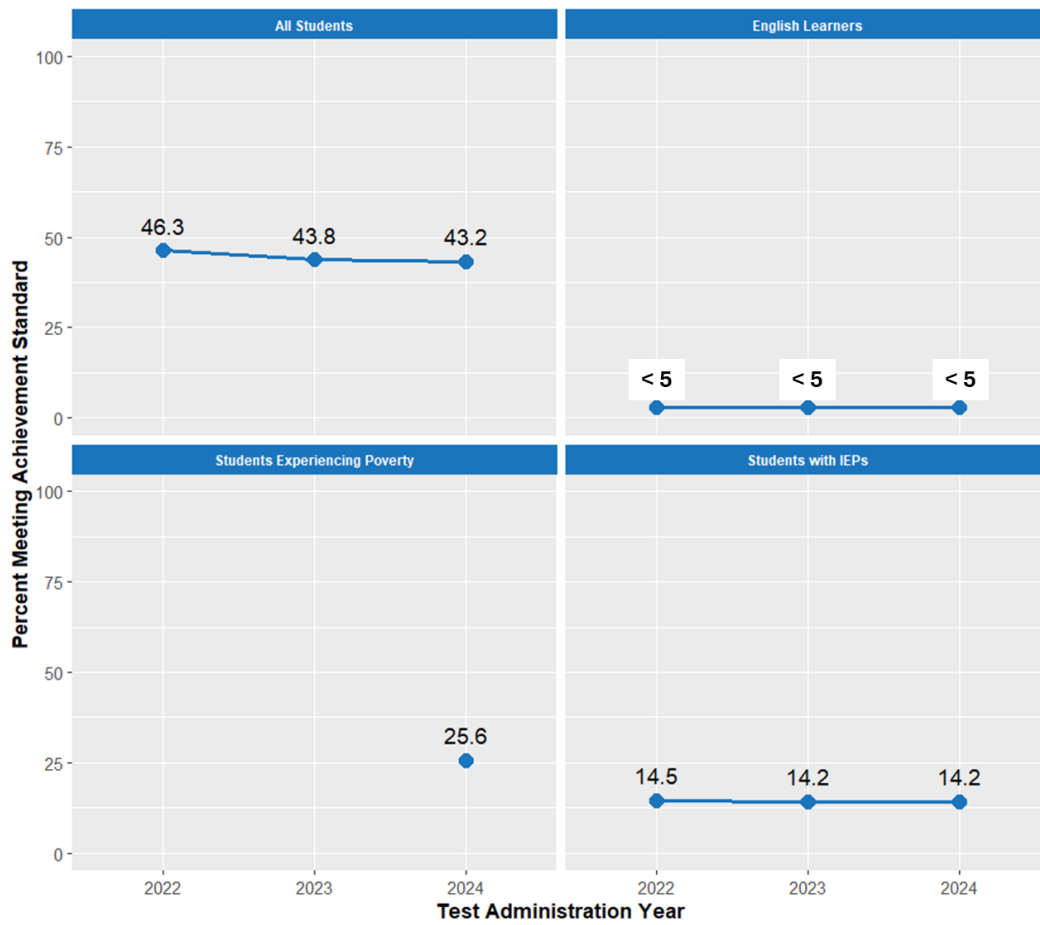


7th Grade English Language Arts Achievement by Racial/Ethnic Identity



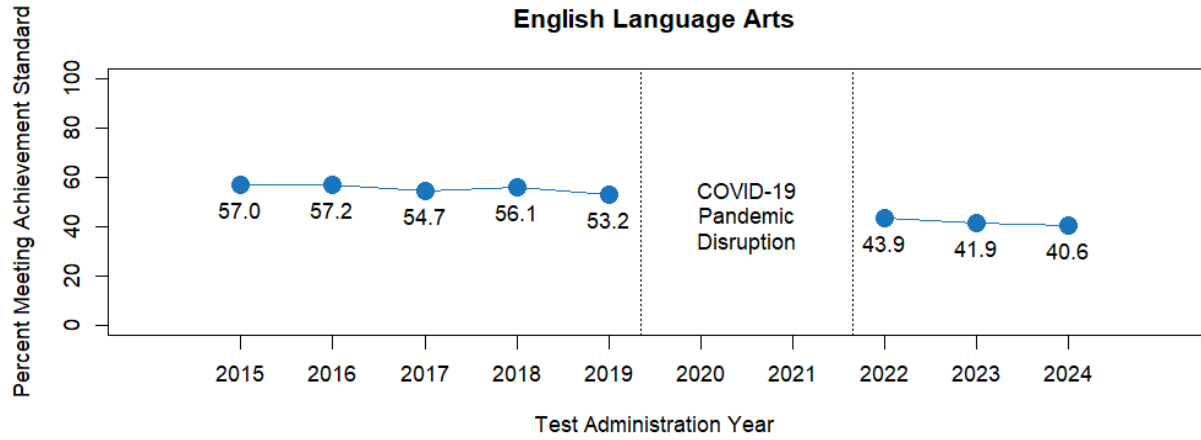
Full data available in [Supplemental Data Tables](#)

7th Grade English Language Arts Achievement for English Learners, Students Experiencing Poverty, and Students with IEPs

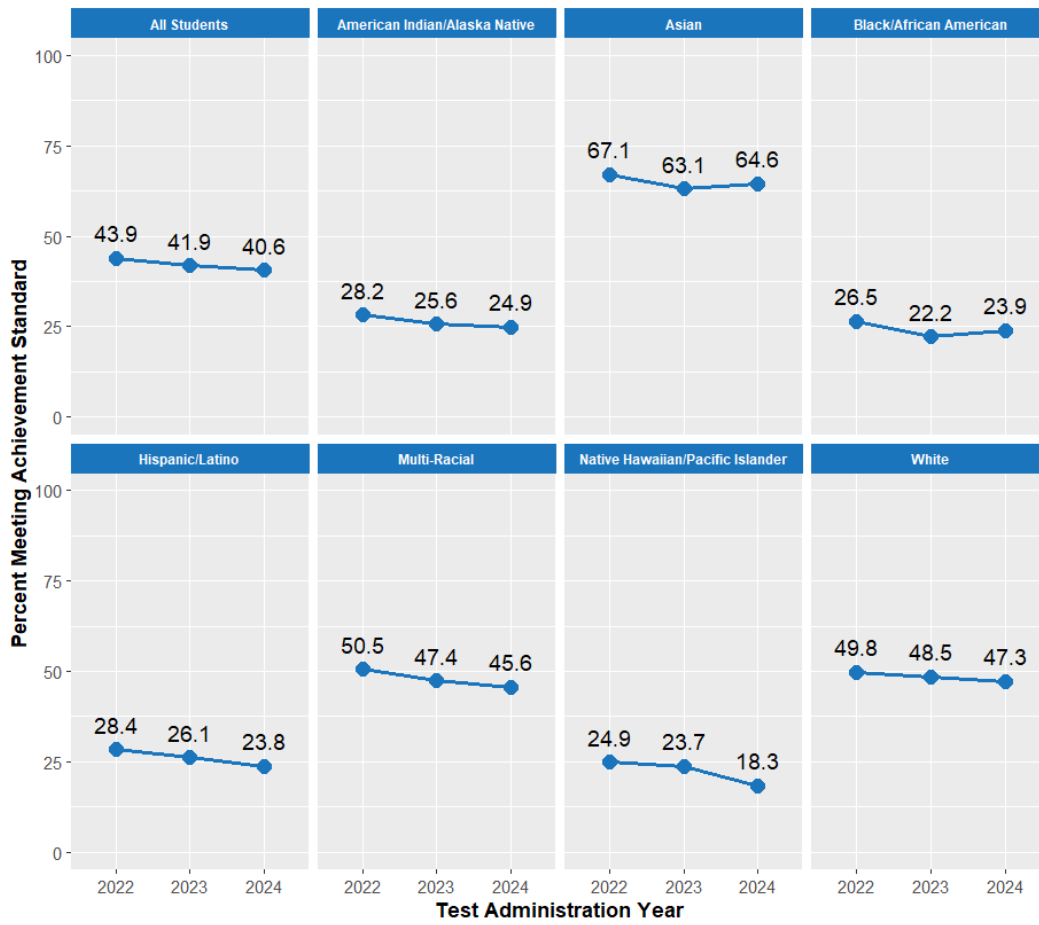


Full data available in [Supplemental Data Tables](#)

8th Grade Achievement in ELA by Year

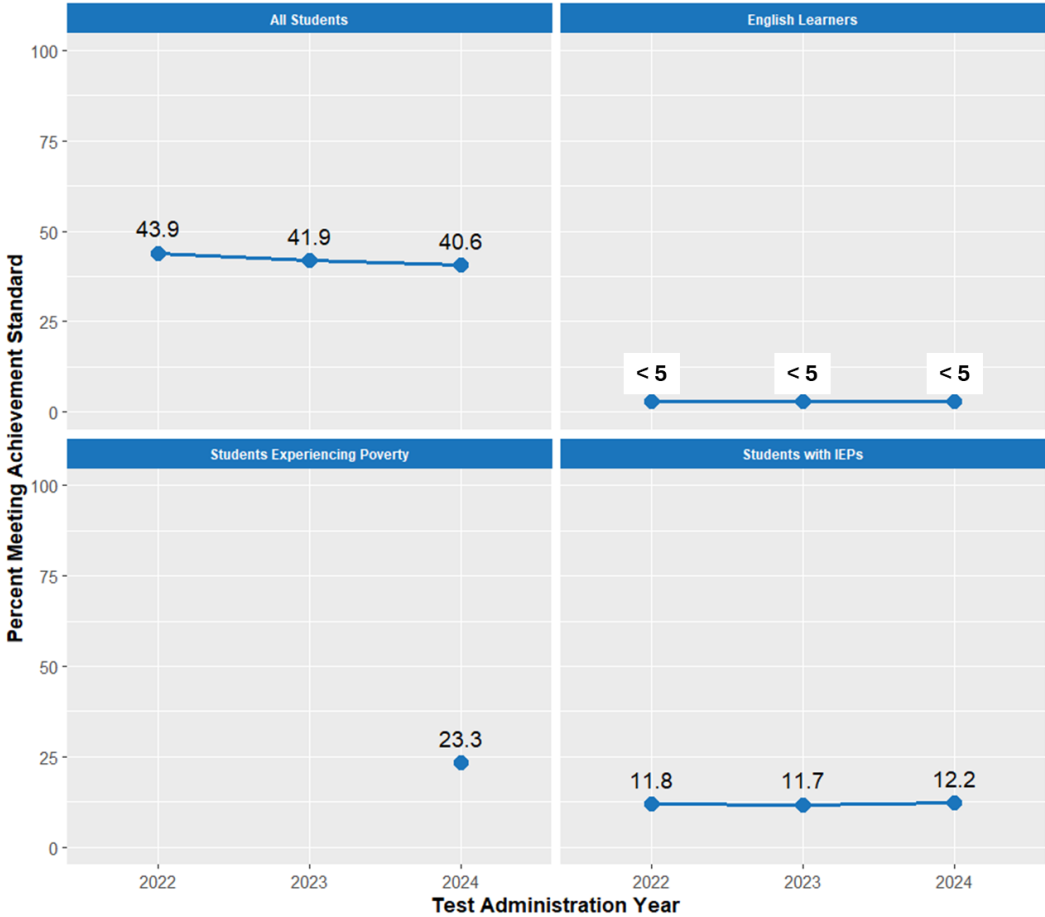


8th Grade English Language Arts Achievement by Racial/Ethnic Identity



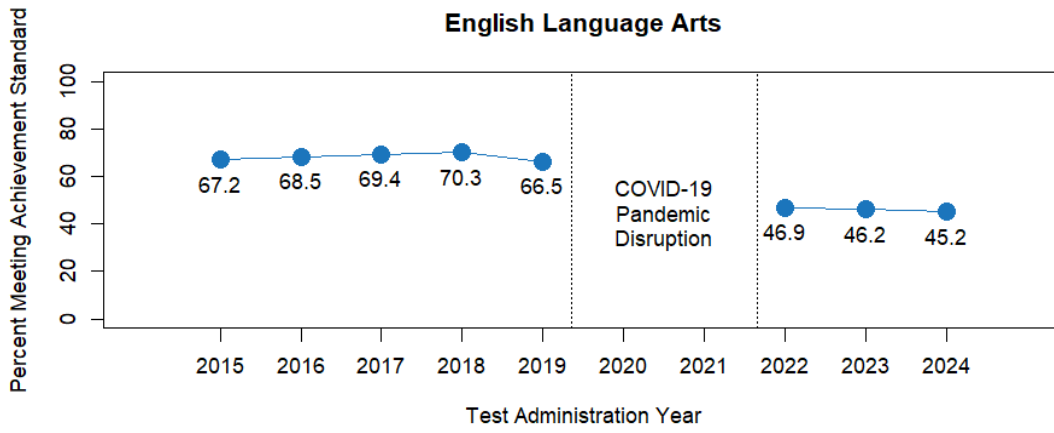
Full data available in [Supplemental Data Tables](#)

8th Grade English Language Arts Achievement for English Learners, Students Experiencing Poverty, and Students with IEPs

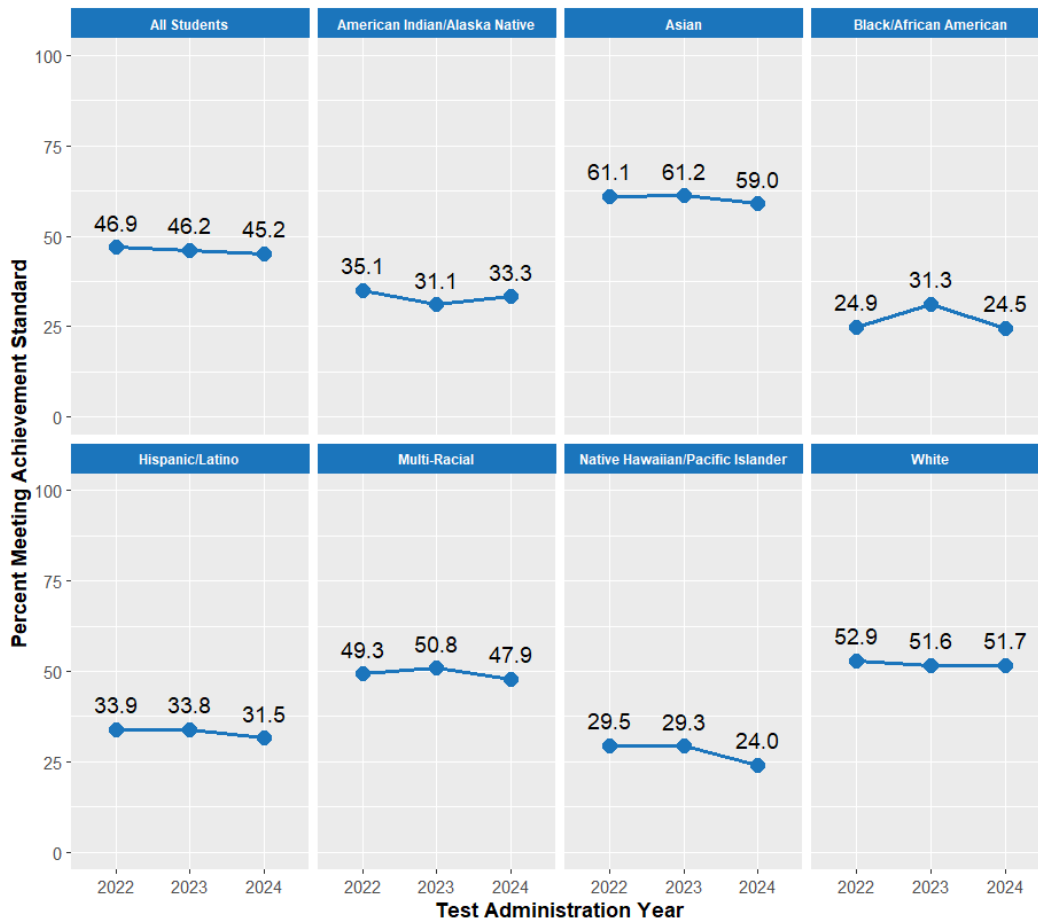


Full data available in [Supplemental Data Tables](#)

11th Grade Achievement in ELA by Year - All Students

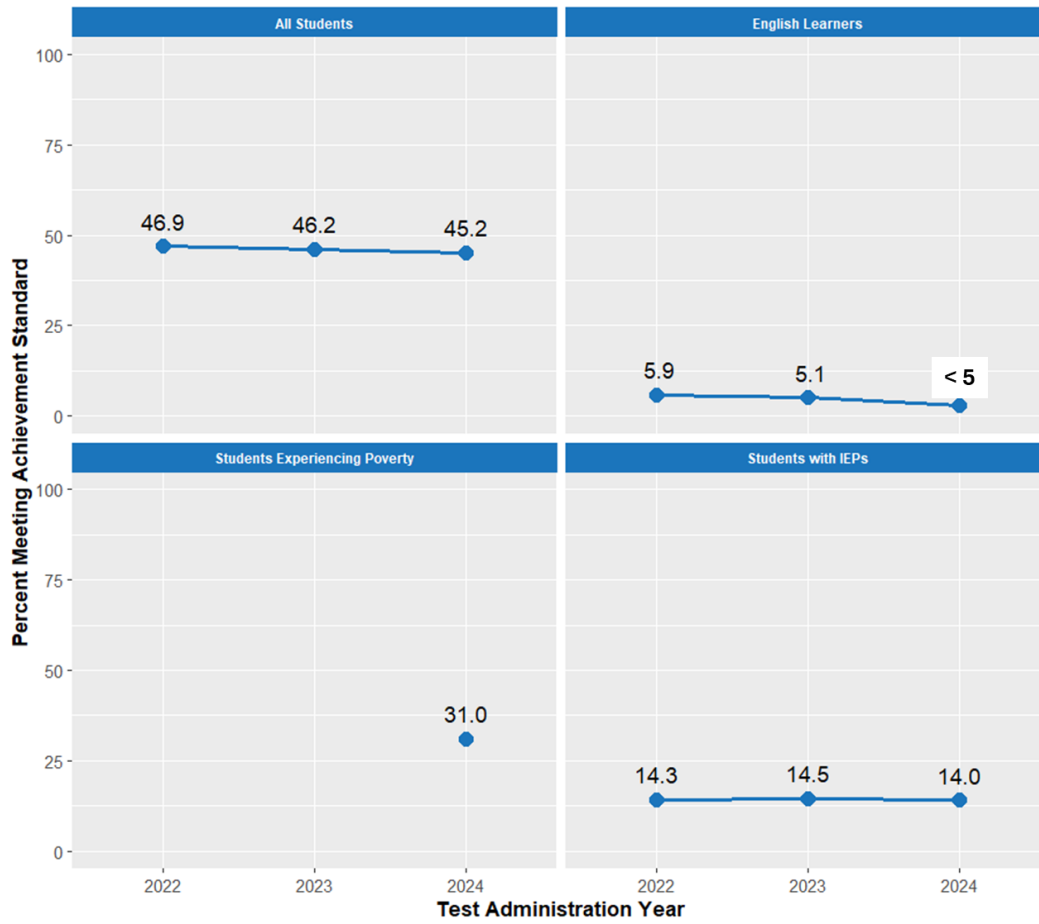


11th Grade English Language Arts Achievement by Racial/Ethnic Identity



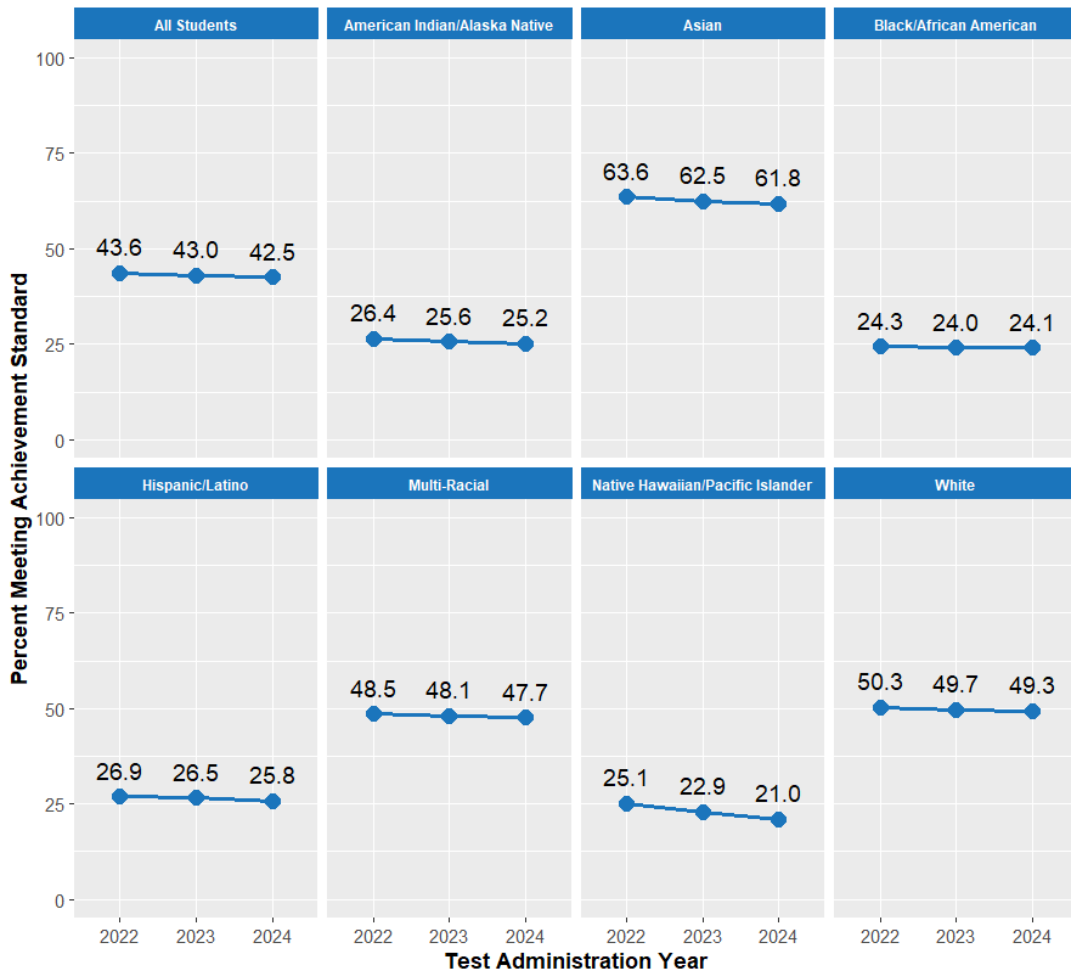
Full data available in [Supplemental Data Tables](#)

11th Grade English Language Arts Achievement for English Learners, Students Experiencing Poverty, and Students with IEPs



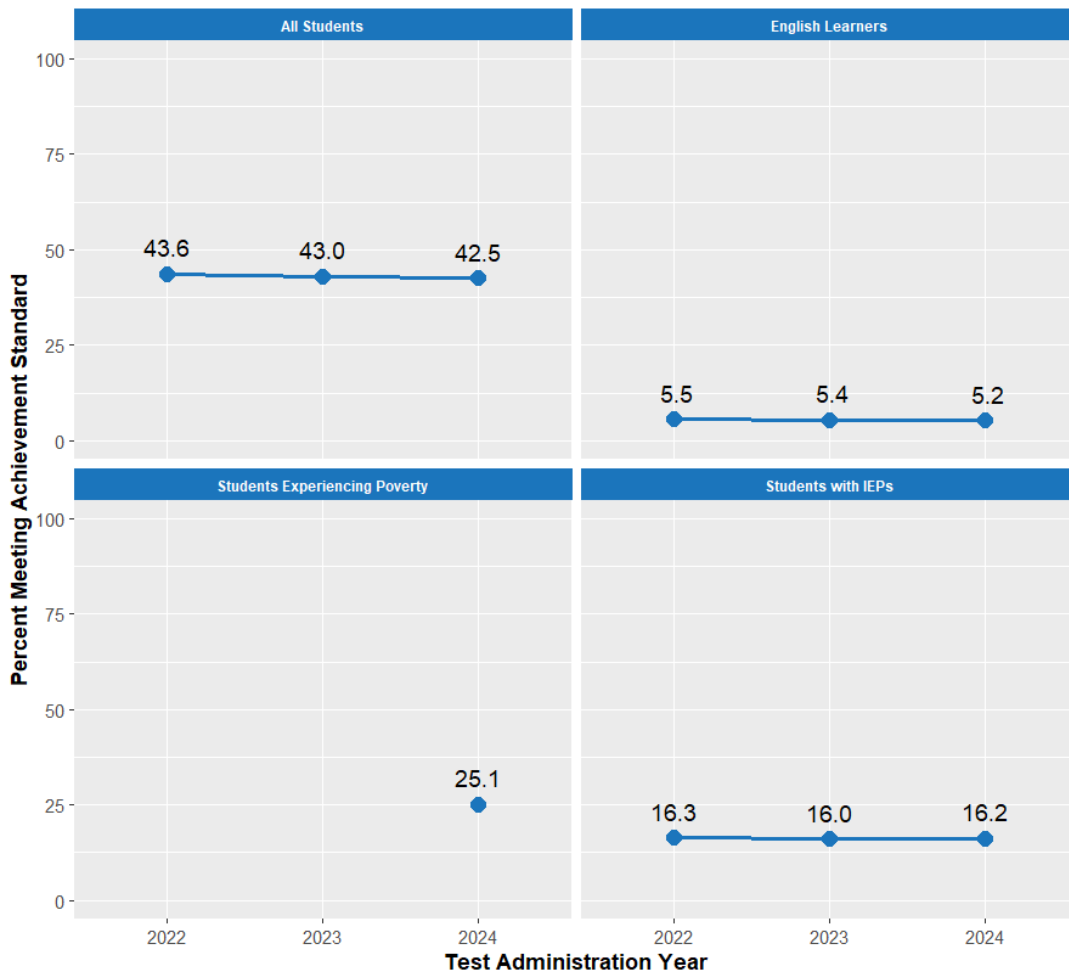
Full data available in [Supplemental Data Tables](#)

ELA Achievement by Racial/Ethnic Identity - All Students



Full data available in [Supplemental Data Tables](#)

ELA Achievement for English Learners, Students Experiencing Poverty, and Students with IEPs - All Students



Full data available in [Supplemental Data Tables](#)

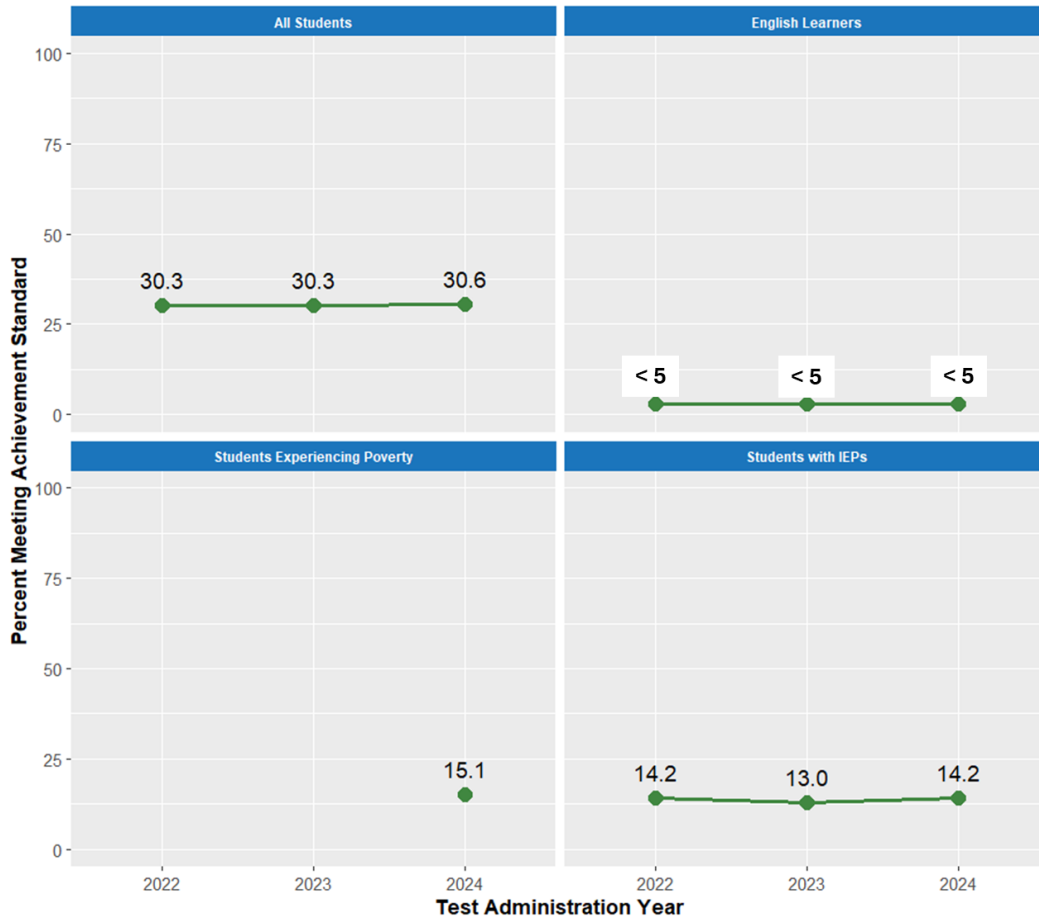
ACHIEVEMENT - SCIENCE

5th Grade Science Achievement by Racial/Ethnic Identity



Full data available in [Supplemental Data Tables](#)

5th Grade Science Achievement for English Learners, Students Experiencing Poverty, and Students with IEPs



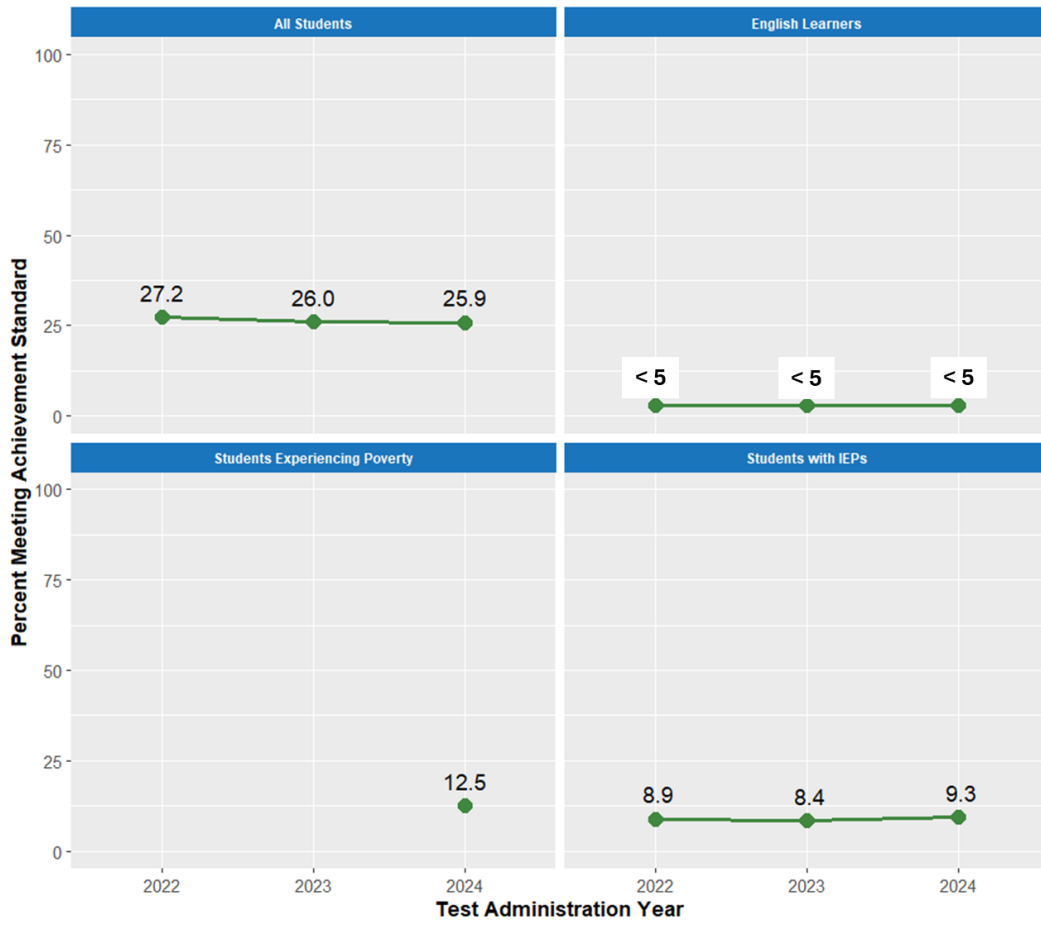
Full data available in [Supplemental Data Tables](#)

8th Grade Science Achievement by Racial/Ethnic Identity



Full data available in [Supplemental Data Tables](#)

8th Grade Science Achievement for English Learners, Students Experiencing Poverty, and Students with IEPs



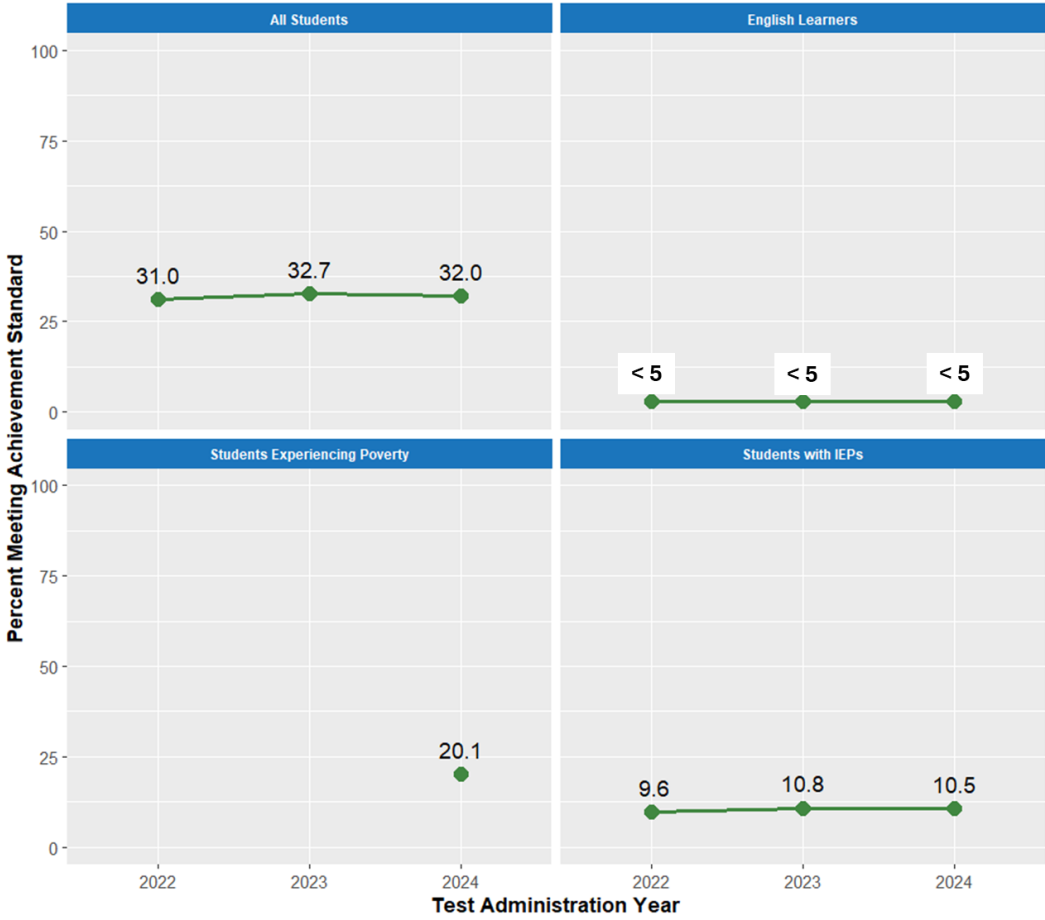
Full data available in [Supplemental Data Tables](#)

11th Grade Science Achievement by Racial/Ethnic Identity



Full data available in [Supplemental Data Tables](#)

11th Grade Science Achievement for English Learners, Students Experiencing Poverty, and Students with IEPs



Full data available in [Supplemental Data Tables](#)

Achievement Rates by Grade Table - Change from 2022 to 2024

Achievement Rates by Grade												
Grade	ELA				Math				Science			
	21-22	22-23	23-24	23/24 Chng	21-22	22-23	23-24	23/24 Chng	21-22	22-23	23-24	23/24 Chng
3	39.4	39.4	39.0	-0.4	39.4	39.7	39.9	+0.2				
4	42.5	42.3	41.9	-0.4	36.1	37.6	37.7	+0.1				
5	46.8	47.1	46.9	-0.2	30.0	30.7	31.4	+0.7	30.3	30.3	30.6	+0.3
6	40.5	41.0	40.7	-0.3	27.5	28.1	28.4	+0.3				
7	46.3	43.8	43.2	-0.6	29.5	29.6	30.5	+0.9				
8	43.9	41.9	40.6	-1.3	25.9	25.5	26.4	+0.9	27.2	26.0	25.9	-0.1
11*	46.9	46.2	45.2	-1.0	20.4	20.4	20.0	-0.4	31.0	32.7	32.0	-0.7
All	43.6	43.0	42.5	-0.5	30.4	30.6	31.0	+0.4	29.3	29.4	29.3	-0.1

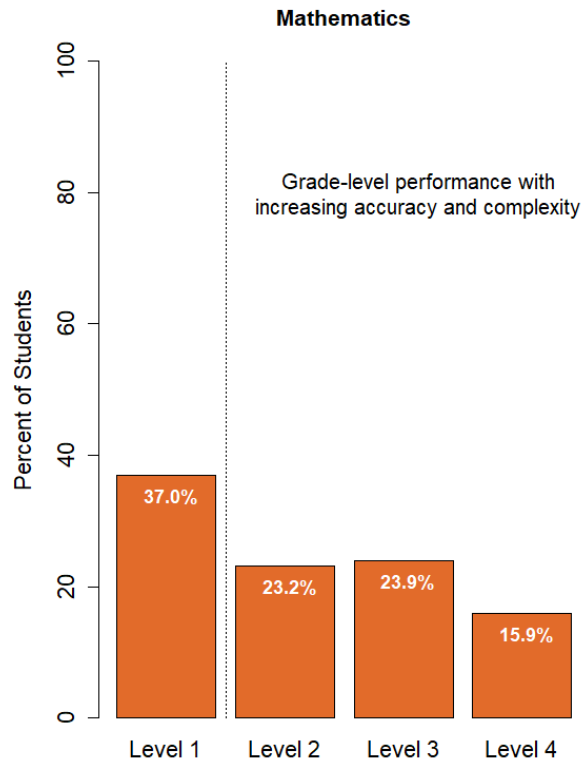
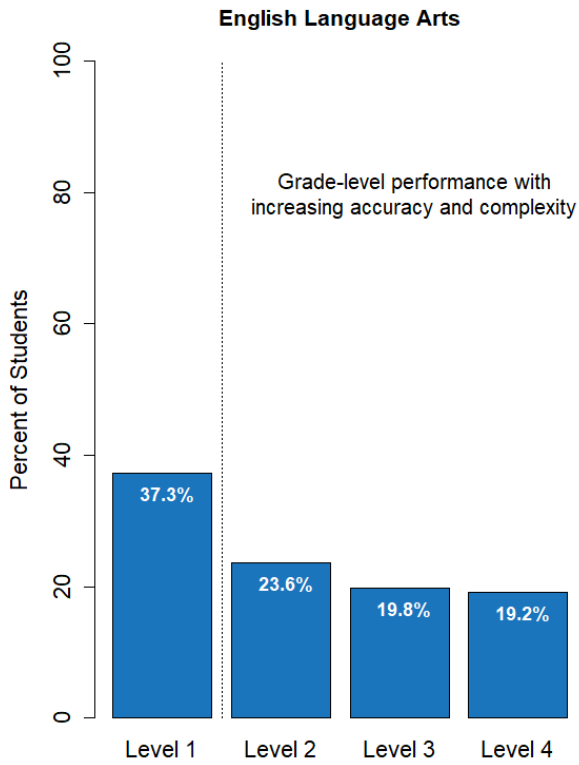
* High School participation rates in spring 2024 were not sufficient to support comparisons across schools or districts

Achievement Rates by Student Group Table - Change from 2022 to 2024

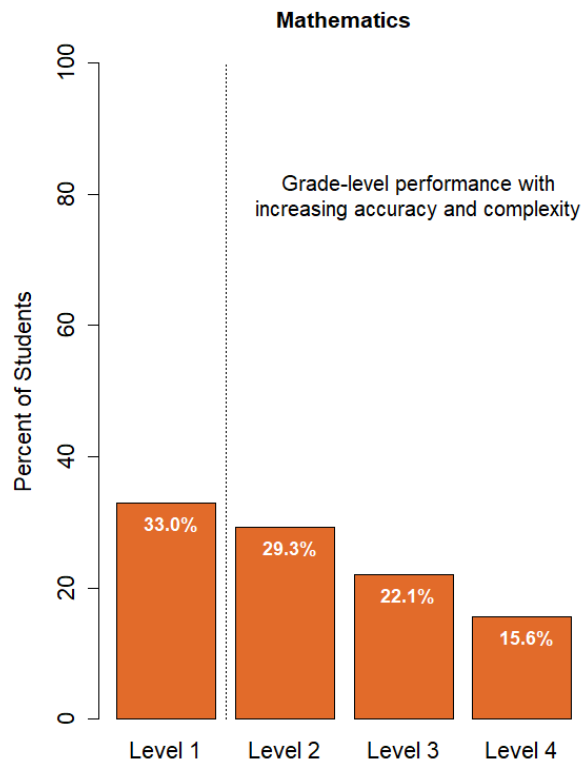
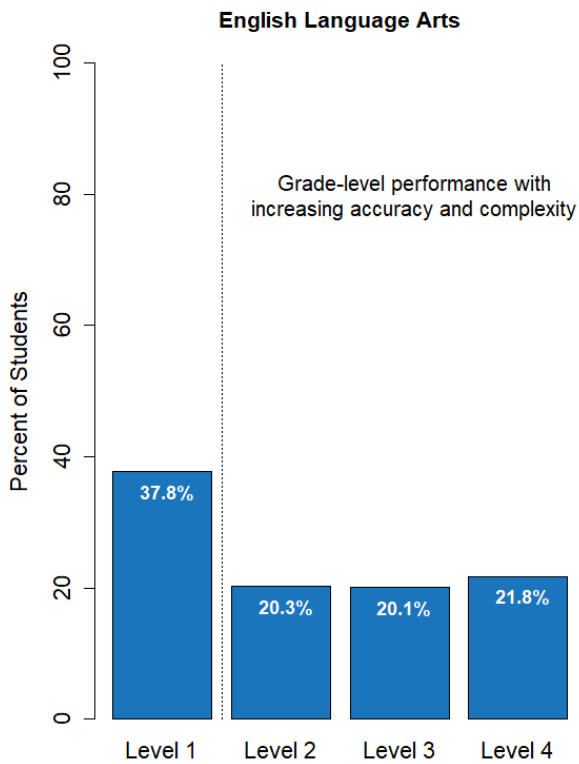
Student Group	ELA				Math				Science			
	21-22	22-23	23-24	23/24 Chng	21-22	22-23	23-24	23/24 Chng	21-22	22-23	23-24	23/24 Chng
Students Experiencing Poverty			25.1				15.4				15.4	
English Learners	5.5	5.4	5.2	-0.2	< 5	< 5	5.1	+	< 5	< 5	< 5	+
Students with IEPs	16.3	16.0	16.2	+0.2	11.6	12.1	13.0	+0.9	11.2	10.8	11.6	+0.8
American Indian/Alaska Native	26.4	25.6	25.2	-0.4	14.3	13.6	14.5	+0.9	15.0	16.3	17.4	+1.1
Asian	63.6	62.5	61.8	-0.7	56.8	56.4	55.7	-0.7	45.7	44.9	43.6	-1.3
Black/African American	24.3	24.0	24.1	+0.1	12.9	13.3	14.5	+1.2	12.5	12.1	10.3	-1.8
Hispanic/Latino	26.9	26.5	25.8	-0.7	15.1	15.1	15.3	+0.2	14.9	14.7	14.6	-0.1
Multiracial	48.5	48.1	47.7	-0.4	34.4	35.4	35.4	+0.0	33.1	34.2	33.0	-1.2
Native Hawaiian/Pacific Islander	25.1	22.9	21.0	-1.9	11.6	11.4	11.0	-0.4	12.2	12.6	11.1	-1.5
White	50.3	49.7	49.3	-0.4	36.0	36.4	36.9	+0.5	35.2	35.5	35.7	+0.2

Achievement by Performance Level by Grade - All Students

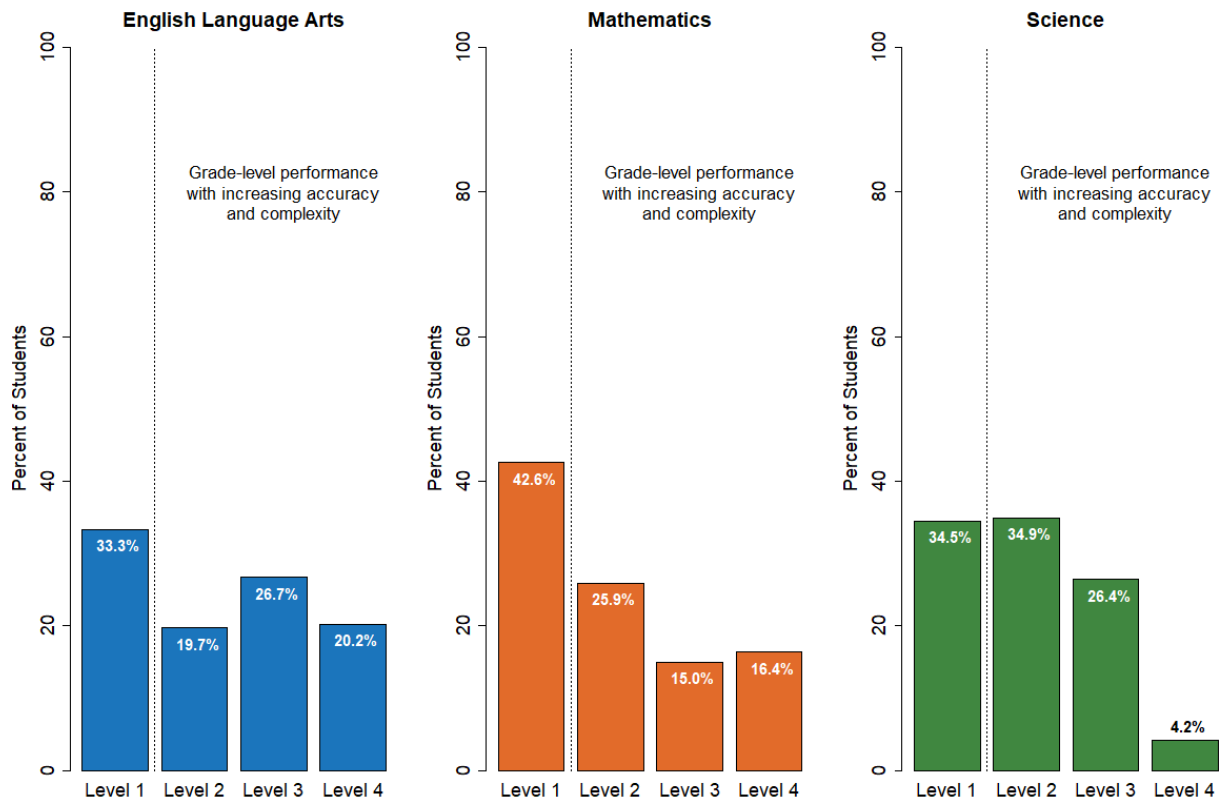
3rd Grade Achievement by Performance Level



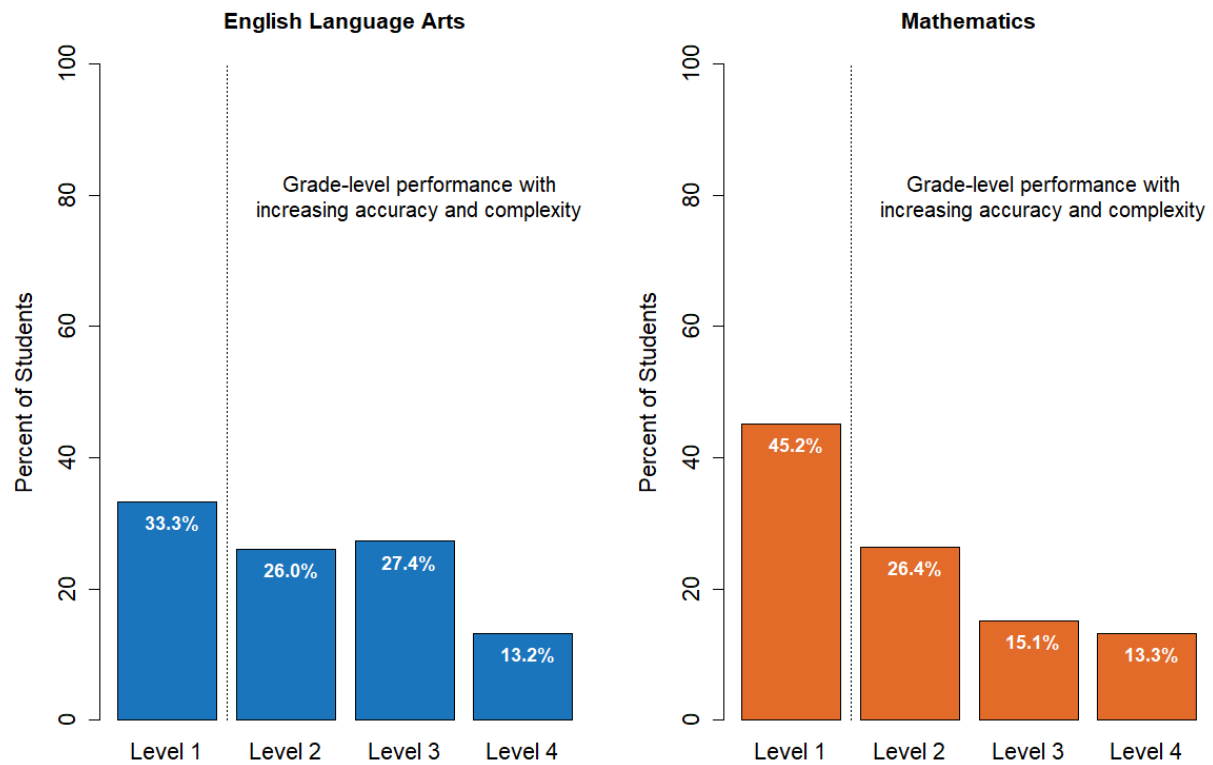
4th Grade Achievement by Performance Level



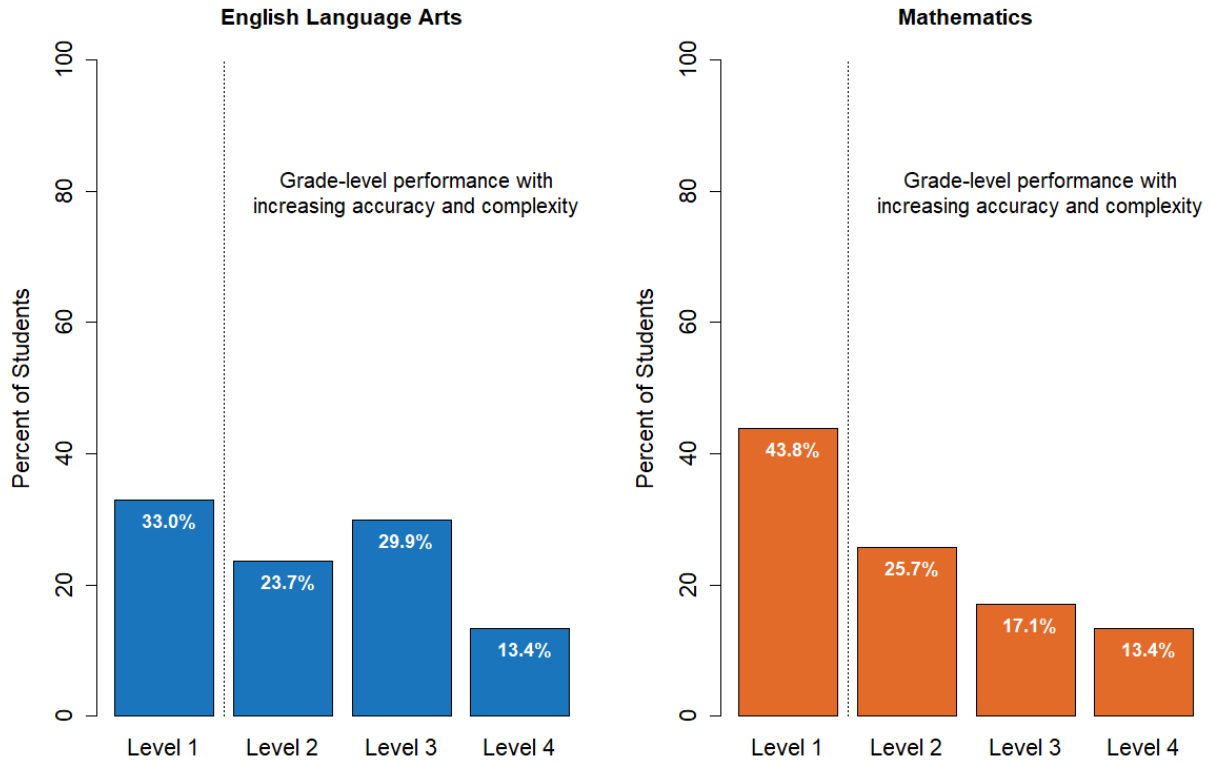
5th Grade Achievement by Performance Level



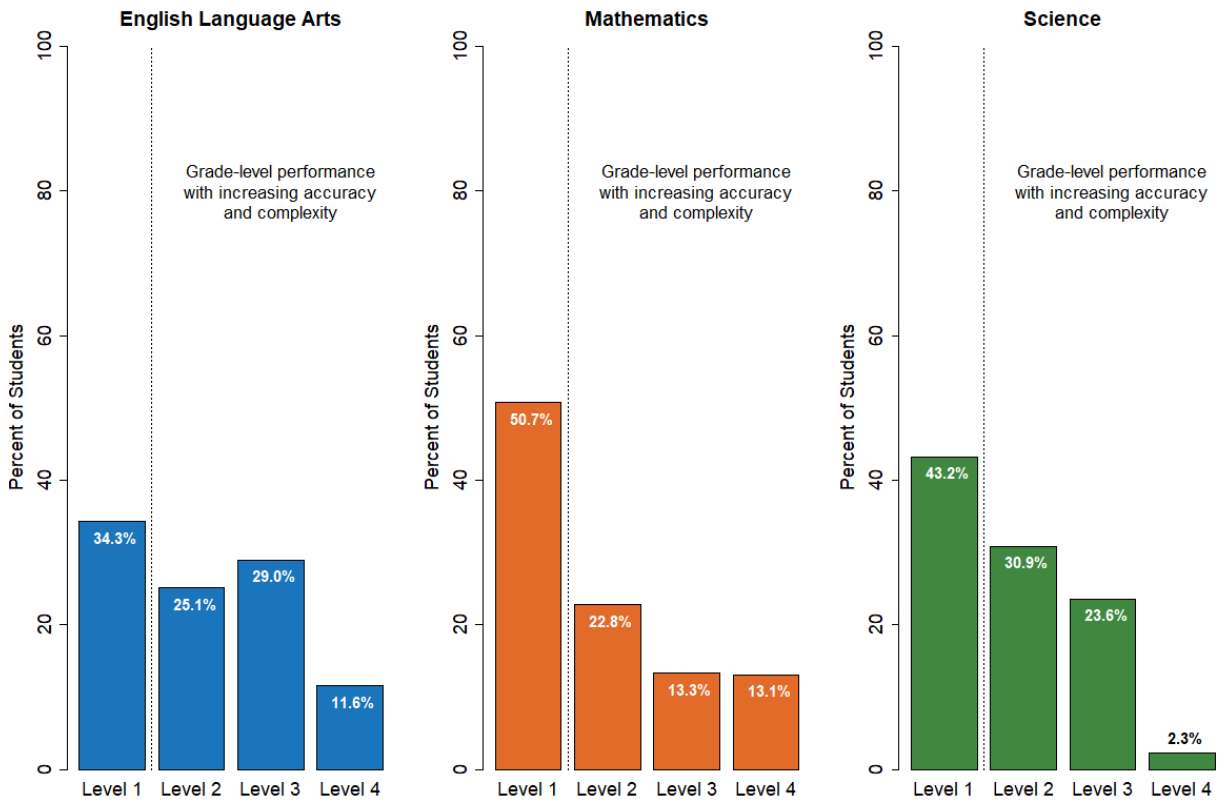
6th Grade Achievement by Performance Level



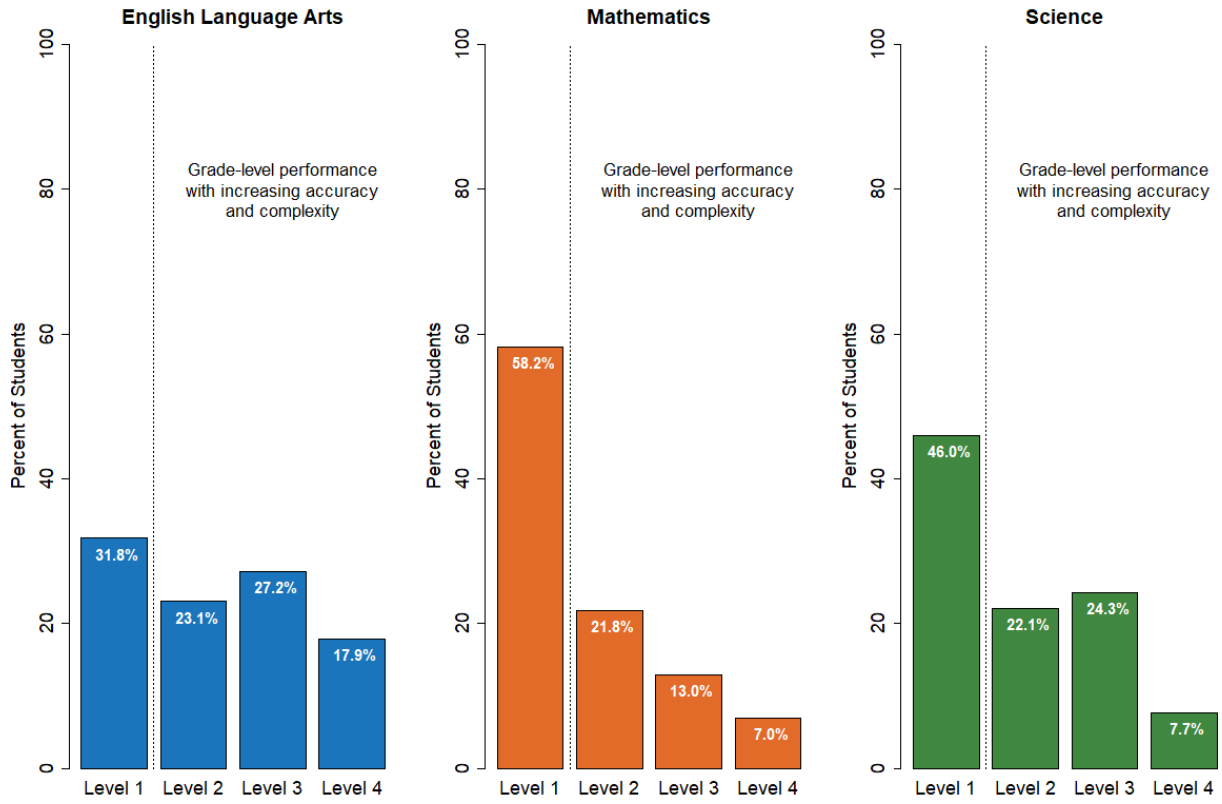
7th Grade Achievement by Performance Level



8th Grade Achievement by Performance Level



11th Grade Achievement by Performance Level



Supplemental Data Tables

American Indian/Alaska Native Students - All Grades, All Content Areas

Subject	Year	Grade						
		3	4	5	6	7	8	11
English Language Arts	2022	20.8	21.7	27.1	24.4	28.0	28.2	35.1
English Language Arts	2023	20.5	24.0	27.2	22.1	28.7	25.6	31.1
English Language Arts	2024	21.6	23.4	27.9	24.2	21.8	24.9	33.3
Mathematics	2022	22.7	15.6	10.8	13.2	15.5	10.6	12.5
Mathematics	2023	22.2	18.2	14.7	10.0	13.7	10.9	5.7
Mathematics	2024	24.9	20.7	11.5	10.4	11.8	12.4	9.1
Science	2022			14.0			11.8	20.9
Science	2023			14.1			14.7	20.8
Science	2024			13.9			13.2	25.5

Asian Students - All Grades, All Content Areas

Subject	Year	Grade						
		3	4	5	6	7	8	11
English Language Arts	2022	57.3	61.6	64.9	63.1	68.8	67.1	61.1
English Language Arts	2023	58.1	61.8	64.4	61.4	67.6	63.1	61.2
English Language Arts	2024	56.1	61.4	65.2	61.6	64.6	64.6	59.0
Mathematics	2022	61.8	59.8	55.3	55.2	59.6	57.2	42.2
Mathematics	2023	64.4	62.3	55.1	55.4	58.5	54.1	41.9
Mathematics	2024	62.4	62.3	55.5	54.7	58.5	54.9	39.3
Science	2022			46.4			47.8	41.4
Science	2023			44.3			42.1	49.3
Science	2024			43.6			43.0	44.2

Black/African American Students - All Grades, All Content Areas

Subject	Year	Grade						
		3	4	5	6	7	8	11
English Language Arts	2022	21.0	25.2	26.4	21.5	24.9	26.5	24.9
English Language Arts	2023	22.0	21.9	29.4	20.9	22.7	22.2	31.3
English Language Arts	2024	23.1	23.7	26.7	23.4	23.4	23.9	24.5
Mathematics	2022	17.7	16.9	11.7	10.7	11.8	11.9	5.7
Mathematics	2023	21.2	16.4	12.0	11.6	12.4	9.8	7.2
Mathematics	2024	21.4	18.6	14.0	12.2	12.9	11.5	7.9
Science	2022			11.8			11.6	16.0
Science	2023			12.5			9.1	16.2
Science	2024			9.6			9.8	12.0

Hispanic/Latino/a/x Students - All Grades, All Content Areas

Subject	Year	Grade						
		3	4	5	6	7	8	11
English Language Arts	2022	21.4	23.9	28.9	24.5	29.2	28.4	33.9
English Language Arts	2023	22.1	24.6	28.7	25.1	26.4	26.1	33.8
English Language Arts	2024	21.8	24.3	29.2	24.0	26.6	23.8	31.5
Mathematics	2022	22.1	17.7	14.5	13.3	14.1	12.9	9.8
Mathematics	2023	21.9	20.1	14.7	13.3	14.0	11.8	9.5
Mathematics	2024	22.3	19.5	16.0	13.2	14.4	12.1	9.1
Science	2022			14.0			13.1	18.8
Science	2023			13.6			12.2	19.2
Science	2024			14.4			11.6	18.4

Multi-Racial Students - All Grades, All Content Areas

Subject	Year	Grade						
		3	4	5	6	7	8	11
English Language Arts	2022	43.7	47.8	51.2	46.0	51.7	50.5	49.3
English Language Arts	2023	46.0	46.3	53.7	45.7	47.4	47.4	50.8
English Language Arts	2024	45.4	47.8	51.1	47.5	48.4	45.6	47.9
Mathematics	2022	42.7	40.7	33.0	30.9	33.8	30.8	22.4
Mathematics	2023	44.9	41.5	35.7	32.4	33.9	30.3	24.6
Mathematics	2024	44.3	42.8	35.2	32.7	35.0	30.7	22.7
Science	2022			33.5			31.7	34.6
Science	2023			35.4			31.2	36.6
Science	2024			34.9			29.8	34.6

Native Hawaiian/Pacific Islander Students - All Grades, All Content Areas

Subject	Year	Grade						
		3	4	5	6	7	8	11
English Language Arts	2022	19.7	23.5	28.0	22.0	29.9	24.9	29.5
English Language Arts	2023	14.2	20.4	25.9	24.8	24.0	23.7	29.3
English Language Arts	2024	18.6	21.2	25.1	19.8	20.4	18.3	24.0
Mathematics	2022	14.7	15.5	11.9	10.3	13.7	8.8	< 5
Mathematics	2023	14.9	13.4	11.9	10.6	10.3	9.6	7.7
Mathematics	2024	16.8	12.6	10.3	11.3	11.9	6.9	6.6
Science	2022			12.2			9.5	16.7
Science	2023			10.0			11.0	17.9
Science	2024			9.1			9.1	17.2

White Students - All Grades, All Content Areas

Subject	Year	Grade						
		3	4	5	6	7	8	11
English Language Arts	2022	46.5	49.7	54.2	46.8	53.3	49.8	52.9
English Language Arts	2023	46.1	49.5	54.4	47.4	51.0	48.5	51.6
English Language Arts	2024	45.9	48.9	54.4	47.0	50.2	47.3	51.7
Mathematics	2022	46.3	43.1	35.9	32.7	35.1	30.1	24.5
Mathematics	2023	46.5	44.5	36.7	33.6	35.4	30.4	24.6
Mathematics	2024	46.8	44.9	37.4	33.9	36.6	31.6	24.3
Science	2022			37.1			32.7	36.1
Science	2023			37.2			31.6	38.3
Science	2024			37.6			31.9	38.0

English Learners - All Grades, All Content Areas

Subject	Year	Grade						
		3	4	5	6	7	8	11
English Language Arts	2022	7.7	6.2	6.0	< 5	< 5	< 5	5.9
English Language Arts	2023	7.5	5.9	6.4	< 5	< 5	< 5	5.1
English Language Arts	2024	6.9	6.5	6.2	< 5	< 5	< 5	< 5
Mathematics	2022	10.8	5.7	< 5	< 5	< 5	< 5	< 5
Mathematics	2023	10.5	6.3	< 5	< 5	< 5	< 5	< 5
Mathematics	2024	11.0	7.8	< 5	< 5	< 5	< 5	< 5
Science	2022			< 5			< 5	< 5
Science	2023			< 5			< 5	< 5
Science	2024			< 5			< 5	< 5

Students with IEPs - All Grades, All Content Areas

Subject	Year	Grade						
		3	4	5	6	7	8	11
English Language Arts	2022	19.6	19.2	19.7	13.6	14.5	11.8	14.3
English Language Arts	2023	19.8	18.9	18.4	13.5	14.2	11.7	14.5
English Language Arts	2024	19.5	18.9	19.3	13.2	14.2	12.2	14.0
Mathematics	2022	21.3	16.9	12.4	9.2	7.9	6.1	< 5
Mathematics	2023	22.1	18.2	11.3	9.5	9.2	6.2	< 5
Mathematics	2024	22.2	18.8	12.9	9.4	10.2	7.5	< 5
Science	2022			14.2			8.9	9.6
Science	2023			13.0			8.4	10.8
Science	2024			14.2			9.3	10.5

Students Experiencing Poverty - All Grades, All Content Areas

Subject	Year	Grade						
		3	4	5	6	7	8	11
English Language Arts	2024	22.0	24.2	28.4	23.5	25.6	23.3	31.0
Mathematics	2024	22.2	20.2	14.7	12.4	14.5	11.2	8.6
Science	2024			15.1			12.5	20.1